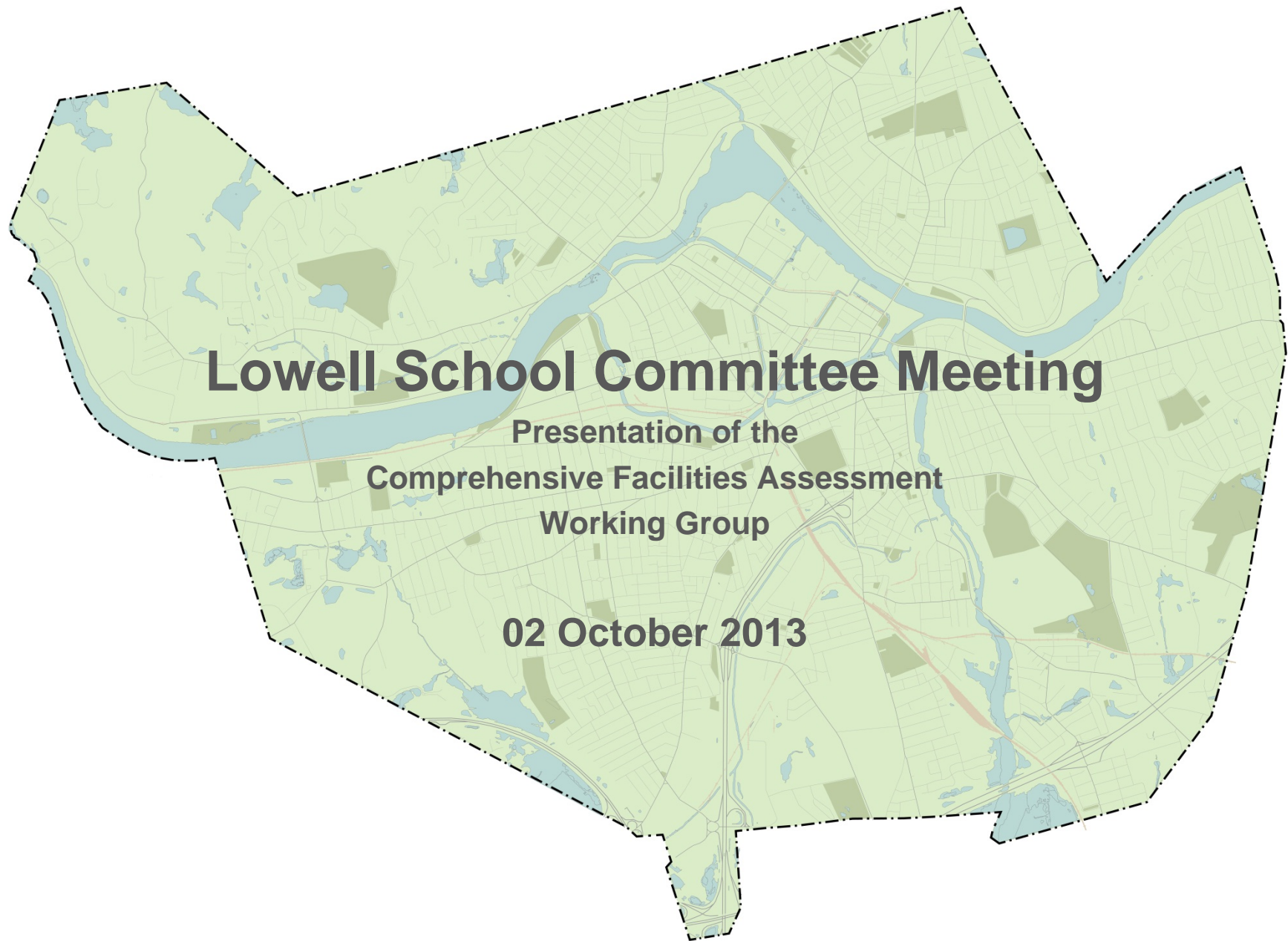


Lowell Public Schools



Lowell School Committee Meeting

Presentation of the
Comprehensive Facilities Assessment
Working Group

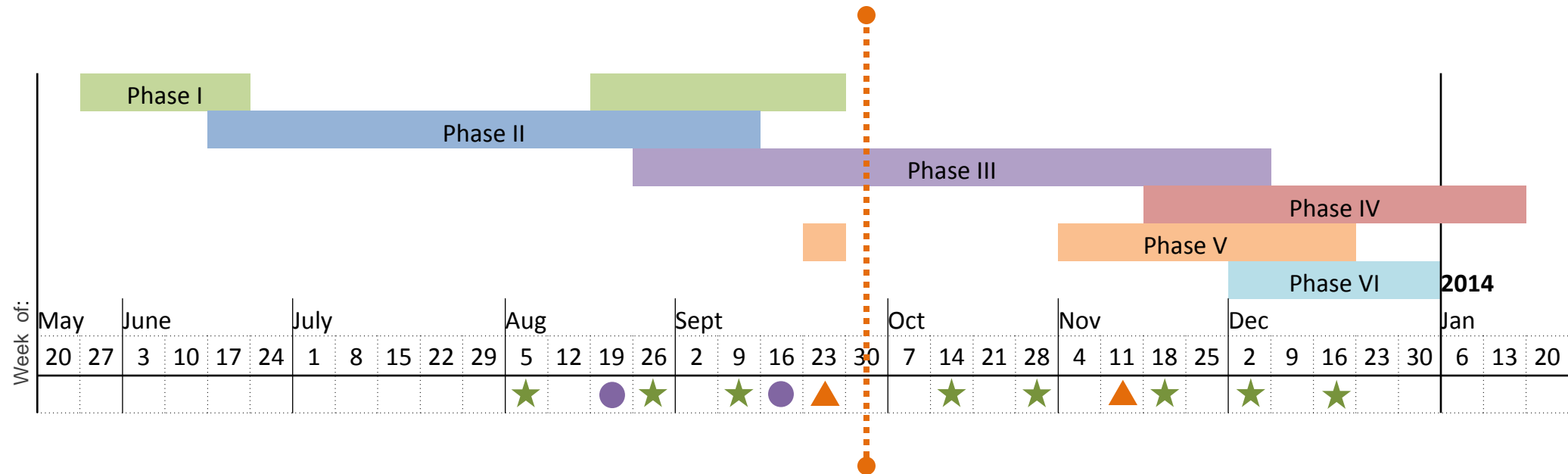
02 October 2013

omr architects

Agenda



Project Schedule



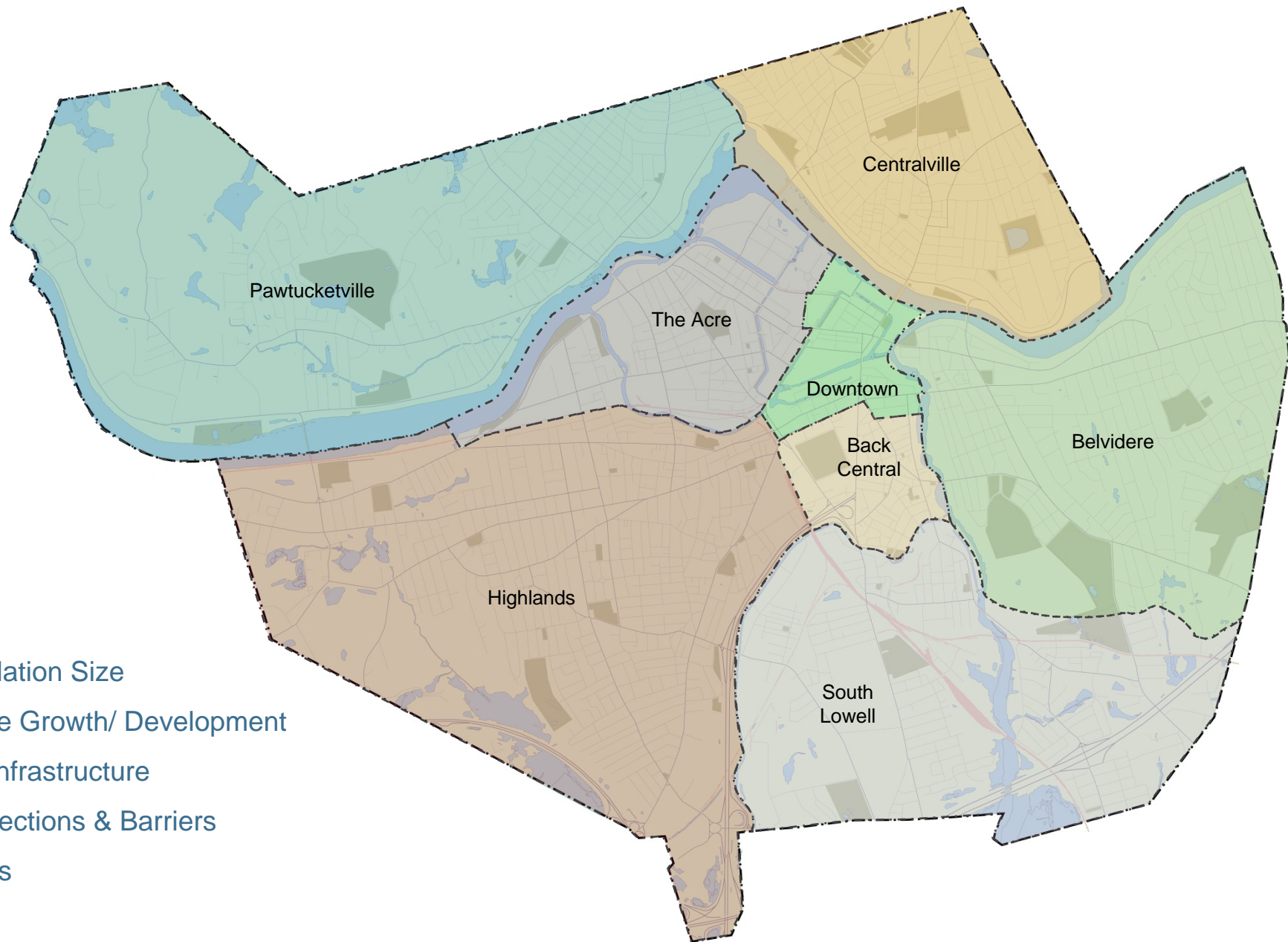
- Late May: Work of contract began
- **Phase I:** **Establish goals & enrollment projections**
- **Phase II:** Assess existing building conditions
- **Phase III:** Develop Master Plan options for neighborhood schools and high school
- **Phase IV:** Prepare draft and final reports
- **Phase V:** Community presentations (TBD with LSFWG)
- **Phase VI:** Massachusetts School Building Authority SOI assistance
- Jan. 2014: Work of contract ends

- ★ LSFWG Meeting
- Visioning Workshop
- ▲ Public Presentation

Agenda

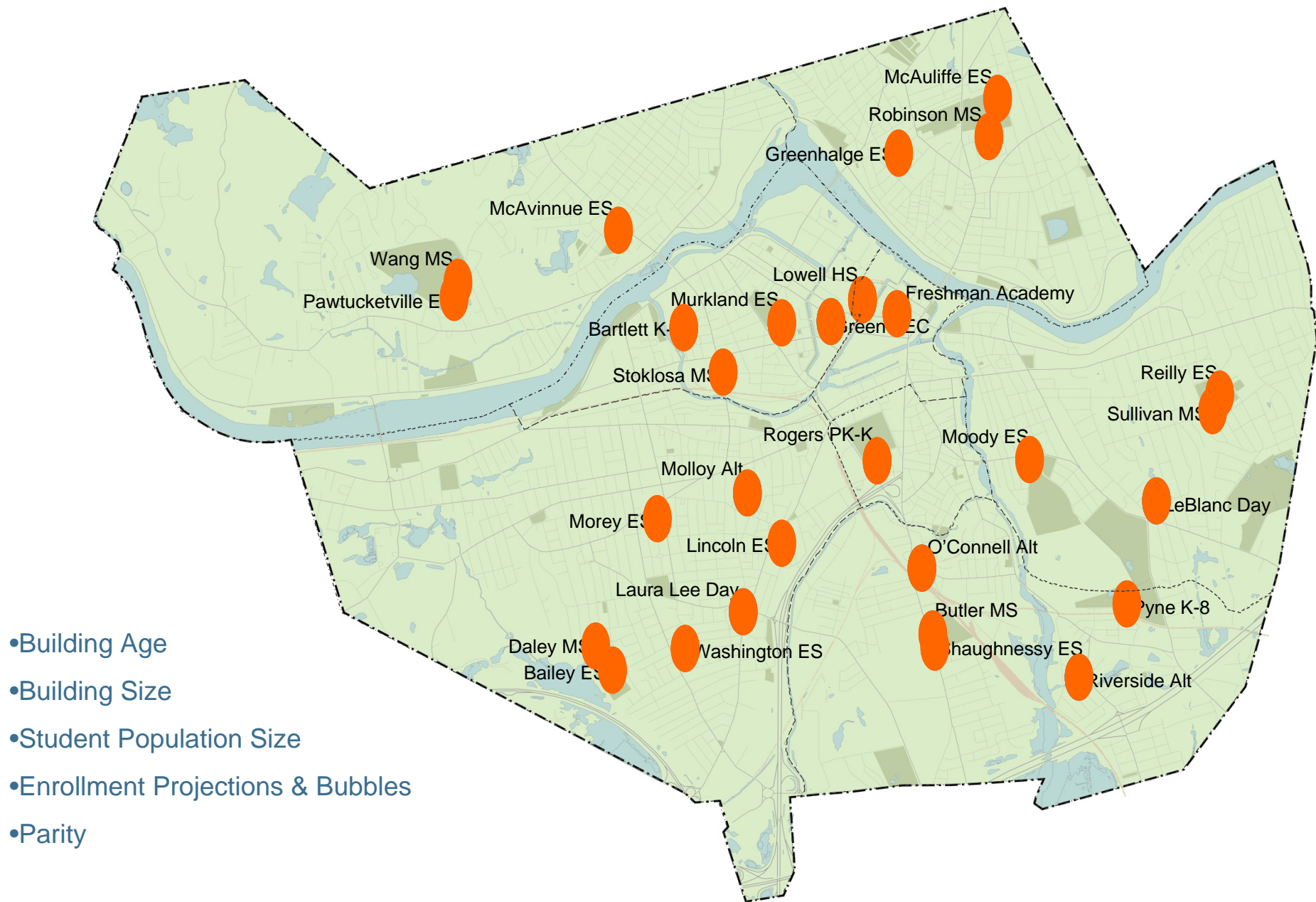


Lowell – Your Neighborhoods

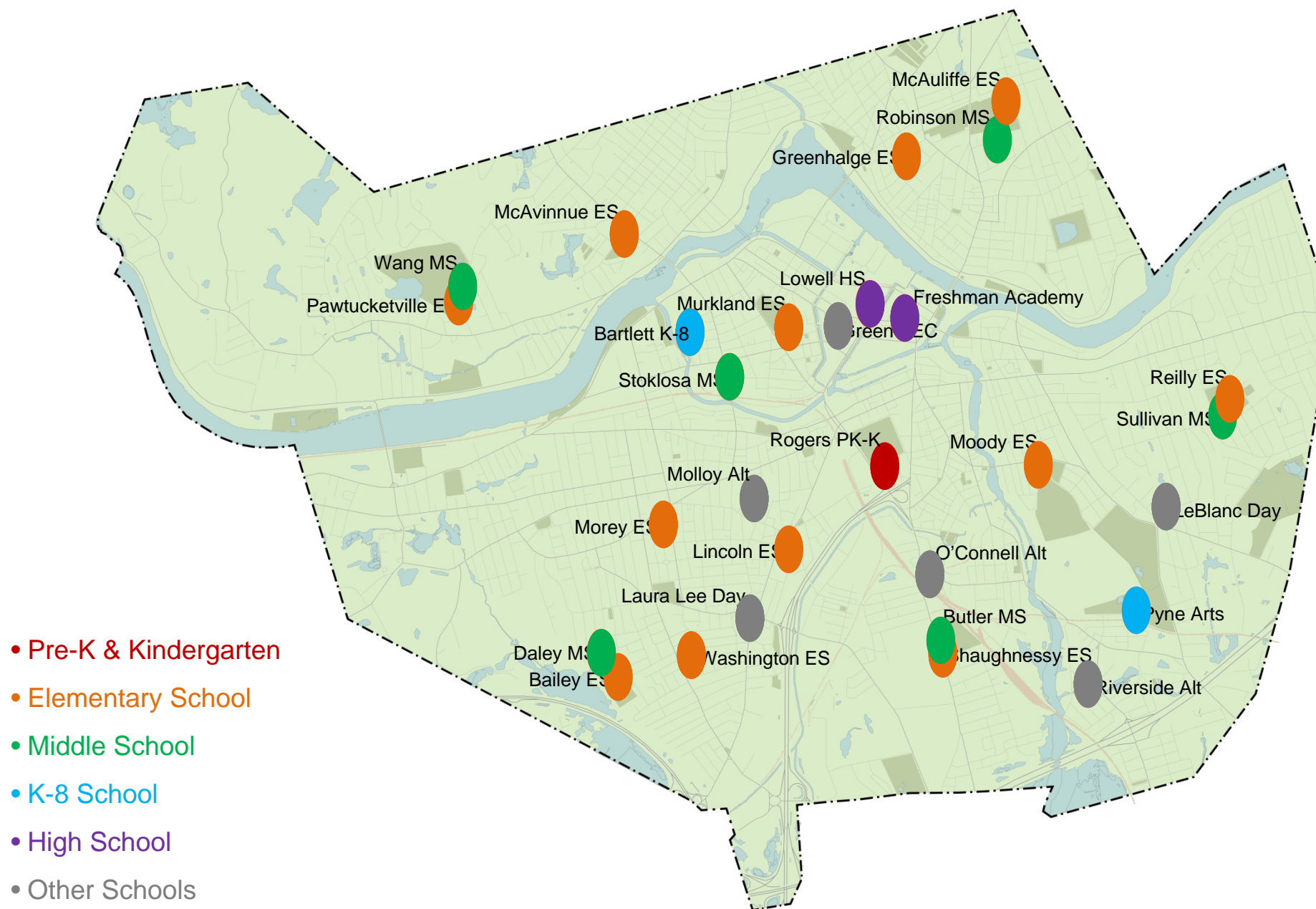


- Population Size
- Future Growth/ Development
- City Infrastructure
- Connections & Barriers
- Needs

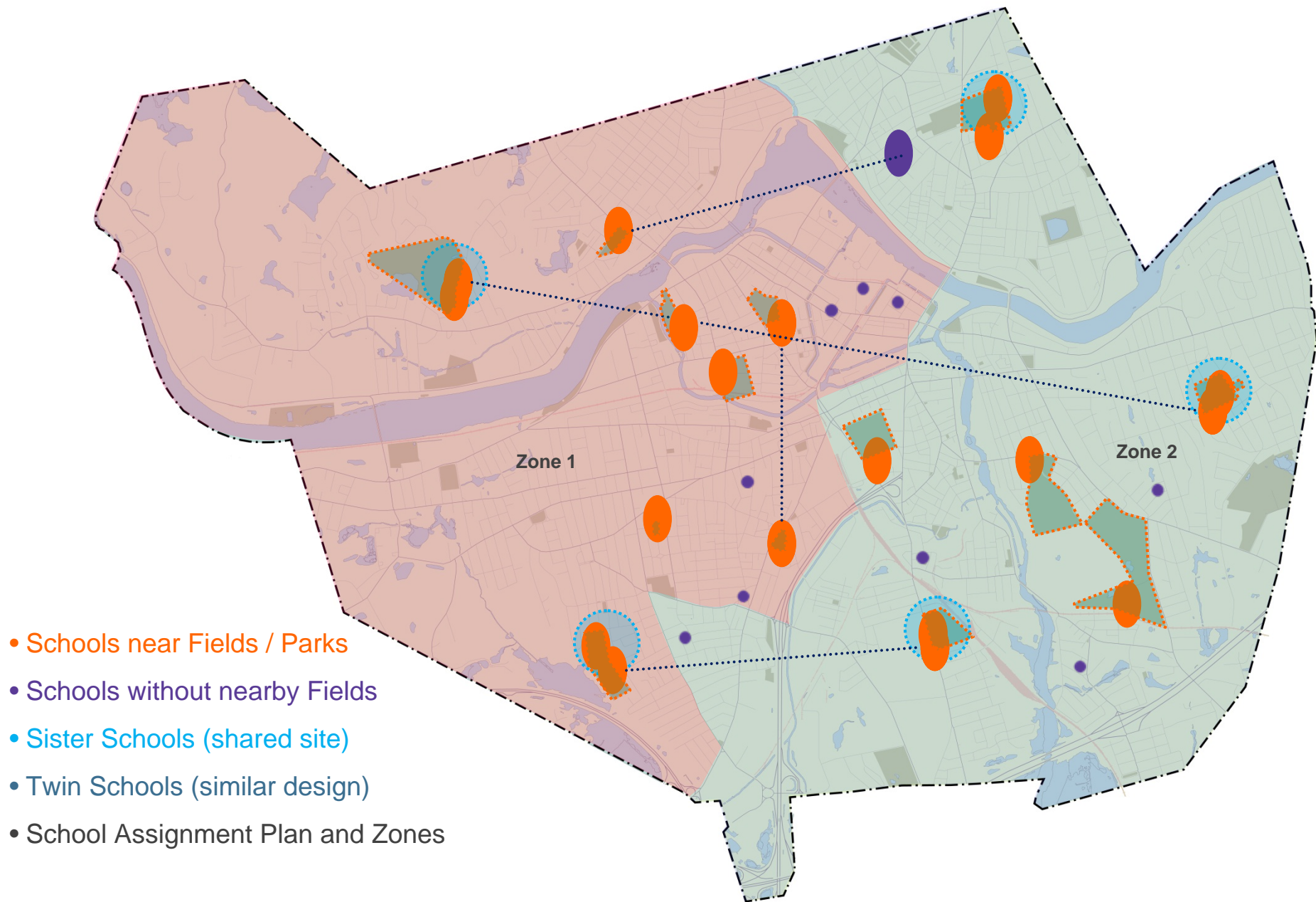
Lowell – Your Schools



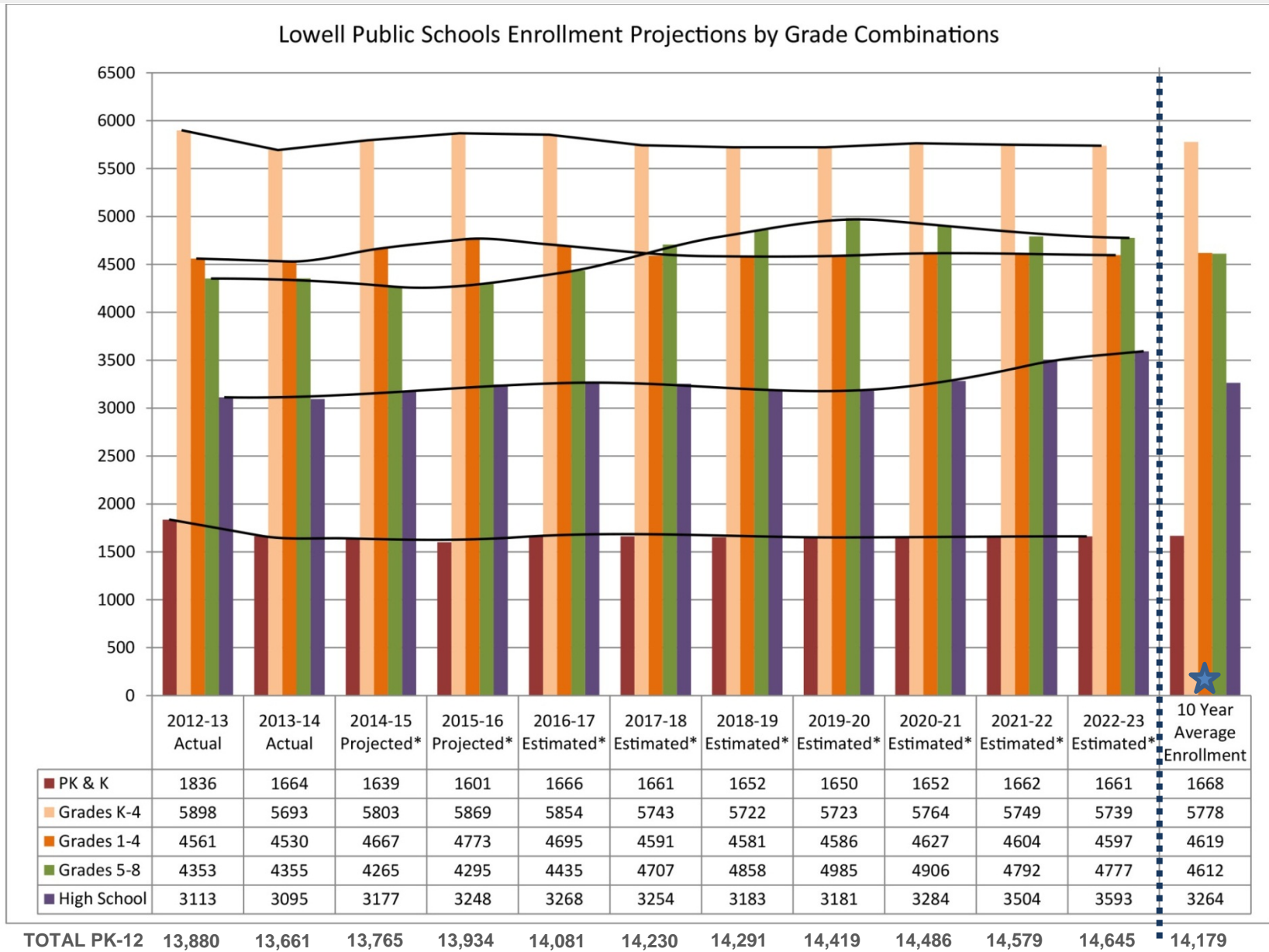
Lowell – Grade Configuration



Lowell – Your School Relationships



Enrollment Projections by Grades



* Projected or Estimated by NESDEC report dated April 8, 2013

★ = 10 year average enrollment

Agenda



Existing Conditions Assessment – Architectural Summary

LEGEND												
	Excellent - New											
	Good - Functional & Maintained											
	Fair - Functions, Service Req'd.											
	Poor - Failure Anticipated											
	Failed - Not Functional											
SITE												
1. PAVED SURFACES / PARKING AREAS												
2. LANDSCAPING / PLAY AREAS / ATHLETIC FIELDS												
3. STAIRS / RAMPS												
EXTERIOR												
1. DOORS & ENTRANCE SYSTEMS												
2. WINDOWS SYSTEMS												
3. EXTERIOR WALLS												
4. ROOFING SYSTEMS												
INTERIOR												
1. FLOOR FINISHES												
2. WALL FINISHES												
3. CEILING FINISHES												
4. DOORS & FRAMES												
5. STAIRS & ELEVATORS												
6. TOILET ROOMS												
7. CASEWORK / FIXED FURNITURE & EQUIPMENT												
8. SIGNAGE												
9. ACCESSIBILITY												
PK-K												
ROGERS / ADMIN												
ELEMENTARY												
BAILEY												
GREENHALGE												
LINCOLN												
MCALIFFE												
MCVINNUE												
MOODY												
MOREY												
MURLAND												
PAWTUCKETVILLE												
REILLY												
SHAUGHNESSY												
WASHINGTON												
K-8												
BARTLETT CPS												
PYNE ARTS												
MIDDLE												
BUTLER												
DALEY												
ROBINSON												
STOKLOSA												
SULLIVAN												
WANG												
HIGH												
FRESHMAN ACADEMEY												
1922 BUILDING												
1980 BUILDING												
ALTERNATIVE/AEC												
CARDINAL O'CONNELL												
GREEN - ADULT ED												
LAURA LEE												
LEBLANC												
MOLLOY												
RIVERSIDE												

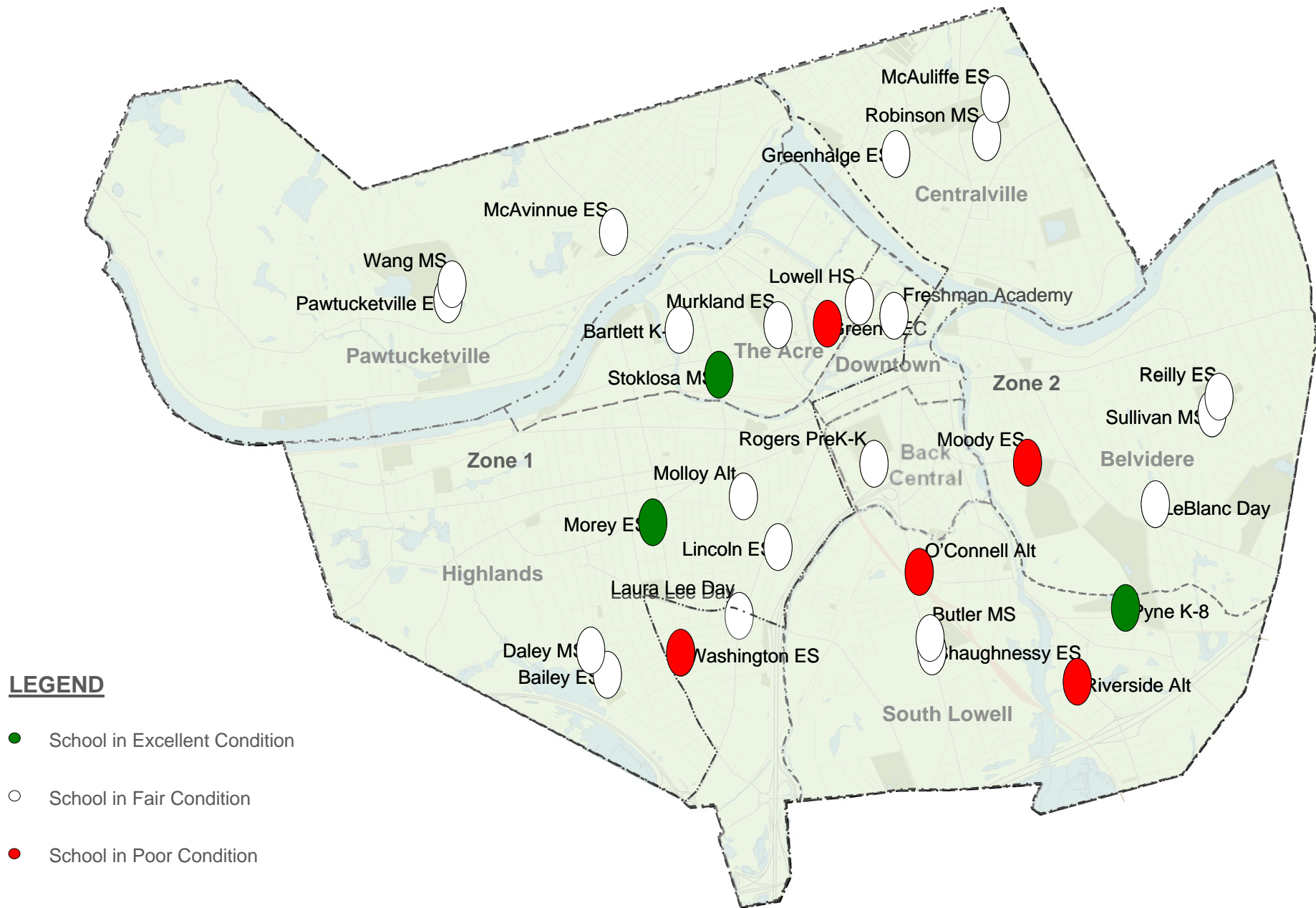
* See Comprehensive Facilities Report for Lowell High School Boiler Plant evaluation.

Existing Conditions Assessment – Engineering Summary

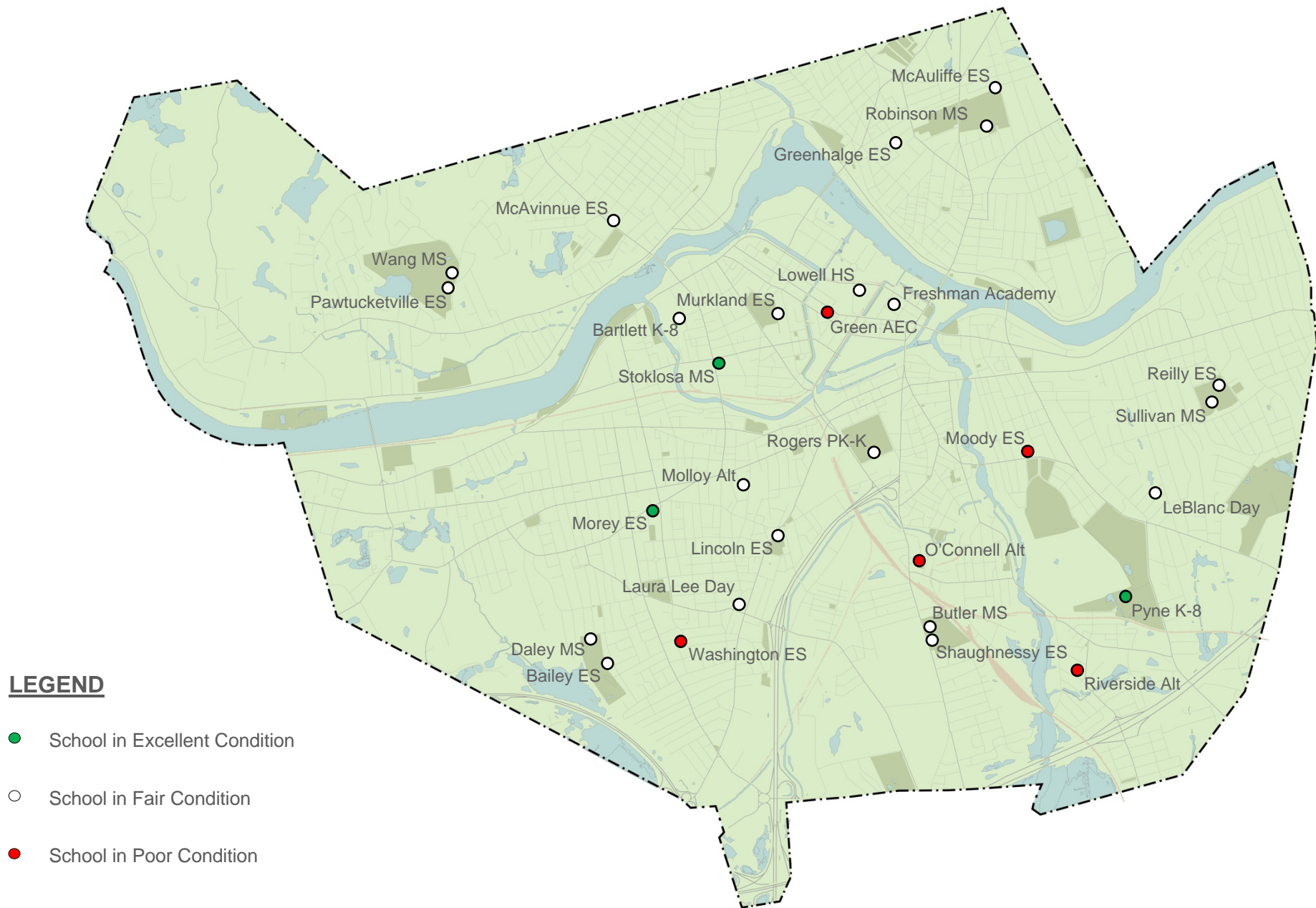
LEGEND		PK-K		ELEMENTARY										K-8		MIDDLE					HIGH			ALTERNATIVE/AEC																																																																																																																																																																																																																																																																																																																																																																																																																																																																																																																																																																																																																																																																																																																																																																																																																																																																																																																																																																																																																																																																																																																																																																																
<div><div></div>Excellent - New</div>	Y Yes	<div><div></div></div>	ROGERS / ADMIN	<div><div></div></div>	<div><div></div></div>	<div><div></div></div>	<div><div></div></div>	<div><div></div></div>	<div><div></div></div>	<div><div></div></div>	<div><div></div></div>	<div><div></div></div>	<div><div></div></div>	<div><div></div></div>	<div><div></div></div>	<div><div></div></div>	<div><div></div></div>	<div><div></div></div>	<div><div></div></div>	<div><div></div></div>	<div><div></div></div>	<div><div></div></div>	<div><div></div></div>	<div><div></div></div>	<div><div></div></div>	<div><div></div></div>	<div><div></div></div>	<div><div></div></div>	<div><div></div></div>	<div><div></div></div>	<div><div></div></div>																																																																																																																																																																																																																																																																																																																																																																																																																																																																																																																																																																																																																																																																																																																																																																																																																																																																																																																																																																																																																																																																																																																																																																									
<div><div></div>Good - Functional & Maintained</div>	N No																																																																																																																																																																																																																																																																																																																																																																																																																																																																																																																																																																																																																																																																																																																																																																																																																																																																																																																																																																																																																																																																																																																																																																																																							
<div><div></div>Fair - Functions, Service Req'd.</div>																																																																																																																																																																																																																																																																																																																																																																																																																																																																																																																																																																																																																																																																																																																																																																																																																																																																																																																																																																																																																																																																																																																																																																																																								
<div><div></div>Poor - Failure Anticipated</div>																																																																																																																																																																																																																																																																																																																																																																																																																																																																																																																																																																																																																																																																																																																																																																																																																																																																																																																																																																																																																																																																																																																																																																																																								
<div><div></div>Failed - Not Functional</div>																																																																																																																																																																																																																																																																																																																																																																																																																																																																																																																																																																																																																																																																																																																																																																																																																																																																																																																																																																																																																																																																																																																																																																																																								

* See Comprehensive Facilities Report for Lowell High School Boiler Plant evaluation.


Existing Conditions Assessment – Your Schools



Existing Conditions Assessment – Your Schools



Agenda

- 
- **Schedule**
 - **Master Planning Considerations**
 - **Existing Conditions Assessment**
 - **Goals & Values / Priorities & Objectives**

Visioning Workshops

Priority Goals



Strengths, Challenges, Opportunities & Goals



Most Critical Factors – Goals & Values

	VOTES: <u>Day 1 / Day 2 = Total</u>	
GRADE CONFIGURATION	0 / 239 =	239
OVERCROWDING	84 / 0 =	84
SAFETY/ SECURITY	82 / 0 =	82
HIGH SCHOOL- Existing Tradition vs. <u>New School</u>	44 / NA =	44
HIGH SCHOOL- <u>Center City Site</u> vs. New Site	NA / 44 =	44
PARITY OF EDUCATIONAL SPACES IN SPED / ALT	0 / 24 =	24
FACILITY CONSTRUCTION & ONGOING MAINTENANCE	0 / 12 =	12
PARITY OF EDUCATIONAL SPACES IN ES / MS	10 / 0 =	10
PARENT & FAMILY INTERFACE	7 / 0 =	7
PARKING CONCERNS	5 / 0 =	5

- **OPERATIONAL ORGANIZATION**
- **PHYSICAL SPACE & FEATURES**

OPERATIONAL ORGANIZATION

1. Use **NESDEC's 10 year, projected, average enrollment for all schools, plus 15 swing classes in grades 1-8.**
2. Provide for the **preferred class sizes of 22-24 at elementary, 24-26 at middle and under 25 at high school.**
3. Provide for the **preferred school strand sizes of four at elementary schools, six at middle schools and two at Washington, Moody and K-8 schools.**
4. Consider providing one or multiple Early Childhood Centers for **Universal, half day, Pre-K** in the Lowell school system.
5. Consider restructuring the current **grade configuration to be: K-5, 6-8, and 9-12, while maintaining 2 or more K-8 schools.**
6. Provide **classroom space to allow more special needs students to remain** in the Lowell school system.
7. Consider **sustainability and life cycle operating costs in all budgetary decisions.**
8. Provide a **clear plan to resolve the immediate repair and maintenance** needs in a timely manner.
9. Educate the City on the **need for ongoing investment in the current facilities.**

PHYSICAL SPACE & FEATURES

1. Family value in education is important: Schools should be designed to **create a strong partnership with families.**
2. Provide **more dedicated space for Special Education instruction** at each neighborhood school.
3. Consider **multiple Lowell High School location options**, including two similar schools under one roof.
4. Retain **Washington and Moody and upgrade to provide parity** in amenities as compared to other neighborhood schools.
5. Resolve classroom overcrowding while providing **dedicated educational and support spaces at each school per current MSBA guidelines.**
6. Provide **21st century-style, flexible spaces** for the development of critical thinking, creative problem solving, independent learning, and student and teacher collaboration at each school.
7. Safety and Security is a priority: Provide **main offices at all front lobbies, security cameras, secure entry hardware, and functioning lockers.**
8. Upgrade and improve **technology to meet 21st century educational needs**, supporting a wireless network and an environment for 1-to-1 student devices for shared, interactive content.
9. Upgrade **Alternative Schools to meet the other neighborhood school standards.**



Approval of
**Goals, Values, Priorities &
Objectives**
for the Master Plan Study

