

March 25, 2024

Rick Underwood
Director of Operations & Maintenance
Lowell Public Schools
155 Merrimack Street, 4th Floor
Lowell, Massachusetts 01852

via email: runderwood@lowell.k12.ma.us

**RE: AHERA 3-Year Reinspection
The Career Academy (Formerly HJ Malloy Alternative School)
125 Smith Street
Lowell, Massachusetts
EFI Project No. 014.07795**

Dear Rick:

EFI Global Inc. (EFI) is pleased to present this AHERA 3-Year Re-inspection Report prepared for The Career Academy (Formerly HJ Malloy Alternative School) located at 125 Smith Street, Lowell, Massachusetts (Site). The reinspection site visit was conducted on February 23, 2024, and the corresponding report was completed in accordance with the United States Environmental Protection Agency (USEPA) Asbestos Hazard Emergency Response Act (AHERA) regulations (40 CFR 763) and Massachusetts Department of Labor Standards "Requirements for Schools Subject to AHERA" regulations (454 CMR 28.13).

EFI relied upon previous 3-Year Inspection and Management Plan Update report from 2014 prepared by Cardo ATC, and 2017 and 2020 reinspection's prepared by EFI Global Inc. The original AHERA Management Plan and other subsequent records were not made available at the school for review. EFI relied upon the 2020 table of identified ACM along with visual assessment and bulk sampling of new materials for this reinspection. The school's Management Plan and records should be located and kept on file at the school and the administrative offices.

EFI is pleased to provide environmental consulting services to Lowell Public Schools. This report should be kept on file with the school's AHERA records. If you have any questions regarding the contents of this report, or need additional information, please contact either of the undersigned at (800) 659-1202. Thank you for the opportunity to serve your environmental needs.

Sincerely,
EFI Global, Inc.



Michael McCarter
Senior Project Manager
MA Asbestos Inspector # AI 001825



Jennifer L. Archacki
Environmental Service Line Principal
MA Asbestos Management Planner #AP 033118

AHERA 3-YEAR REINSPECTION

FOR:

**THE CAREER ACADEMY
(FORMALY HJ MALLOY ALTERNATIVE SCHOOL)
125 SMITH STREET
LOWELL, MASSACHUSETTS**

PREPARED BY:



**155 WEST STREET, SUITE 6
WILMINGTON, MASSACHUSETTS 01887**

EFI PROJECT NUMBER 014.07795

March 25, 2024

TABLE OF CONTENTS

INTRODUCTION.....	1
AHERA 3-YEAR REINSPECTION.....	2
A. AHERA Records Review.....	2
B. ACM Application Types.....	3
C. ACM Assessment Criteria.....	3
D. Response Actions – General Recommendations.....	5
E. AHERA Licensing & Training Documentation.....	5
F. Asbestos Bulk Sampling.....	6
G. ACM Hazard Assessment and Recommended Response Actions.....	7
H. Cost Estimate for Recommended Response Actions.....	7

Attachments:

Attachment A – AHERA Summary Table of ACMs and Recommended Response Actions

Attachment B – Site Plans

Attachment C – 2024 Reinspection Bulk Sample Locations

Attachment D - 2024 Reinspection Asbestos Bulk Sample Laboratory Report

Attachment E – Licenses and Training Certificates of Asbestos Inspector and Management Planner

INTRODUCTION

EFI Global, Inc. (EFI) was retained by Lowell Public Schools to perform a 3-Year AHERA Reinspection in accordance with United States Environmental Protection (USEPA) Asbestos Hazard Emergency Response Act (AHERA) asbestos regulations (40 CFR 763) and Massachusetts Department of Labor Standards “Requirements for Schools Subject to AHERA” regulations (454 CMR 28.13). These regulations, commonly known as the “Asbestos in Schools Rule,” require under 40 CFR 763.80 and 454 CMR 28.13(2)(b)(1) that local education agencies (LEAs) must conduct a reinspection at least once every three years of all friable and nonfriable known or assumed asbestos-containing materials (ACMs). The reinspection includes all previously known and assumed ACMs, as well as any additional suspect ACM not previously included, as required by 40 CFR 763.80 and 454 CMR 28.13 in each school building leased, owned, or otherwise used as a school building. A school building is defined in 454 CMR 28.02 as including each of the following:

- Any structure suitable for use as a classroom, including a school facility such as a library, school eating facility, or facility used in the preparation of food
- Any gymnasium or other facility which is specially designed for athletic or recreational activities for an academic course in physical education
- Any other facility used for the instruction or housing of students or for the administration of educational or research programs
- Any maintenance, storage, or utility facility, including any hallway, essential to the operation of any facility described as a school building above
- Any portico or covered exterior hallway or walkway
- Any exterior portion of a mechanical system used to condition interior space.

EFI conducted a 3-year AHERA reinspection at The Career Academy (Formerly HJ Malloy Alternative School), which involved determining the condition and hazard potential of previously known and assumed ACMs, and additional confirmed and assumed ACMs observed during the 2024 reinspection. The 3-year reinspection was conducted on February 20, 2024, by Michael McCarter, an EPA accredited and Massachusetts Department of Labor Standards (MADLS) licensed Asbestos Inspector, (license number AI-001825). EFI relied upon the 2020 table of identified ACM along with visual assessment and bulk sampling of new materials for this reinspection. The original AHERA Management Plan and other subsequent records were not made available at the school for review. The recommended response actions were prepared by MADLS-licensed Asbestos Management Planner Jennifer Archacki (AP-033118).

A summary of known and assumed ACM within The Career Academy (Formerly HJ Malloy Alternative School) is presented in the AHERA Summary Table in **Attachment A**. Site Plans showing buildings and locations referenced in this report are presented in **Attachment B**.

The Designated Person for the Lowell Public Schools is Rick Underwood. Rick’s contact information is:

Rick Underwood
Director of Operations & Maintenance
Lowell Public Schools
155 Merrimack Street, 4th Floor
Lowell, Massachusetts 01852
978-674-4328
runderwood@lowell.k12.ma.us

AHERA 3-YEAR REINSPECTION**A. AHERA Records Review**

As part of this 3-year reinspection, EFI reviewed available AHERA records for the school, in accordance with the AHERA regulation and 454 CMR 28.13(5)(f). A summary of records reviewed is provided in the table below.

Review of AHERA Documentation The Career Academy (Formerly HJ Malloy Alternative School) 125 Smith Street, Lowell, Massachusetts		
Document/Record	Present?	Comment
Asbestos Management Plan (on hand at school and available for review)	No	No records available at the school or administrative offices for review. The Cardo ATC 2014 3-Year Reinspection and Updated Management Plan is posted on the schools web site. EFI also relied upon in-house records from the 2017 and 2020 reinspections.
Designated Person (Rick Underwood) Training Records	No	No records available at the school or administrative offices for review. Designated Person should receive formal designated person training or review the Designated Person Self Study Guide (available at https://www.epa.gov/sites/default/files/2015-01/documents/dp_study_guide_0.pdf).
Custodial Personnel 2-hour Awareness Training Records	No	No records available at the school or administrative offices for review.
Annual Parental Notification Records	No	No records available at the school or administrative offices for review. Annual notification letters should be sent, and copies kept on file with the AHERA records.
Abatement/Response Action Records (includes abatement, special cleaning activities & small-scale short duration (SSSD) activities and associated monitoring reports and work plans)	No	No records available at the school or administrative offices for review.
Designated Person True and Correct Statement	No	No records available at the school or administrative offices for review.
6-month Surveillance Inspection Records	No	No records available at the school or administrative offices for review.
Previous 3-Year Reinspection Records	No	No records available at the school or administrative offices for review.
Asbestos Labels present (required in routine maintenance areas)	No	No labels observed. Labels should be placed immediately adjacent to ACM present in routine maintenance areas (i.e., boiler rooms, utility closets, etc.)

B. ACM Application Types

ACMs are divided into the following application types:

Thermal system insulation (TSI): Insulation applied to mechanical, heating, and cooling systems such as pipes, boilers, flue breechings, ducts, tanks and fittings.

Surfacing Materials: Material that is spray-applied or trowel-applied to walls, ceilings or structural components (i.e., plasters, acoustical finishes and fireproofing).

Miscellaneous Materials: All other asbestos materials, including but not limited to floor tiles and mastic, ceiling tiles, vinyl cove base and mastic, gypsum board and joint compound, and asbestos-cement board, etc.

C. ACM Assessment Criteria

The assessment is divided into two categories - the physical assessment and the hazard potential assessment.

Physical Assessment

The physical assessment is divided into the following seven categories and describes the material condition at the time of the inspection:

Physical Condition #1 - Damaged or significantly damaged thermal system ACM.

Physical Condition #2 - Damaged friable surfacing ACM.

Physical Condition #3 - Significantly damaged friable surfacing ACM.

Physical Condition #4 - Damaged or significantly damaged miscellaneous ACM.

Physical Condition #5 - ACM with potential for damage.

Physical Condition #6 - ACM with potential for significant damage.

Physical Condition #7 - Any remaining friable ACM or friable suspected ACM.

Hazard Assessment

The hazard assessment is a combination of the physical assessment combined with the potential for disturbance (i.e., physical contact, vibration air movement) as follows:

Hazard Rank #1 – Good condition/Low potential for disturbance

Hazard Rank #2 – Good condition/ Moderate potential for disturbance

Hazard Rank #3 – Good condition/ High potential for disturbance

Hazard Rank #4 – Damaged condition/Low potential for disturbance

Hazard Rank #5 – Damaged condition/Moderate potential for disturbance

Hazard Rank #6 – Damaged condition/High potential for disturbance

Hazard Rank #7 – Significantly damaged condition

The following is the Assessment Criteria used during the inspection:

1. Homogeneous Areas (An area of surfacing material, thermal system insulation material, or miscellaneous material that is uniform in size, color and texture and was applied at approximately the same time) were quantified by location and assessed by condition. Materials are listed as friable or non-friable. Note: friable materials are materials that can be crushed and pulverized to dust by hand pressure. A general condition description for suspect materials used in this inspection is as follows:
 - a. Damaged Surfacing ACM: That material which has deterioration, delamination, water damage, lacks cohesion, is blistered, crumbling, gouged, marred heavily, abraded, or in any way has lost its structural integrity over more than 1% but less than 10 % of the total surface area if the damage is evenly distributed or less than 25%, if the damage is localized in one area of the homogeneous area.
 - b. Significantly Damaged ACM: That material which has deterioration, delamination, water damage, lacks cohesion, is blistered, crumbling, gouged, marred heavily, abraded, or in any way has lost its structural integrity over at least 10% of the surface area if the damage is evenly distributed or at least 25% if the damaged is localized.
 - c. Good Condition ACM: ACM with no visible damage or deterioration in less than one percent of the material and/or coverings.
 - d. ACM with potential for damage: Pertains to circumstances in which:
 - i. Friable ACM is in an area regularly used by building occupants, including maintenance workers, currently in intact (good) condition.
 - ii. There are indications that there is a reasonable likelihood that the material or its covering will become damaged, deteriorated or delaminated due to factors such as vibration, air erosion, water damage, changes in building use, changes in O&M practices, changes in occupancy or recurrent damage.

Note: All ACM in good condition is still considered to have a potential for damage, and in certain instances, has the potential for significant damage.

- e. ACM with potential for significant damage: Pertains to circumstances in which:
 - i. Friable ACM is in an area regularly used by building occupants, including maintenance personnel.
 - ii. Indications show that there is a reasonable likelihood that the material or its covering will become damaged, deteriorated, or delaminated due to factors such as vibration, air erosion, water damage, changes in building use, changes in O&M practices, changes in occupancy or re-occurring damage.

- iii. The material is subject to major or continuing disturbance, due to factors including, but not limited to, accessibility or under certain circumstances, vibration or air erosion.

D. Response Actions – General Recommendations

Specific response actions for each known and assumed ACM located at The Career Academy (Formerly HJ Malloy Alternative School) are in **Attachment A**. The following are general recommendations for response actions associated with managing ACMs at the school.

1. Damaged materials in the school should be repaired, if feasible, or removed to maintain compliance with the AHERA regulation. Damaged ACMs of any quantity listed in the report should be repaired or removed by a Massachusetts licensed Asbestos Contractor following all applicable regulations, in accordance with a work plan design, and final clearance air testing performed in accordance with the AHERA regulations. It is the policy of the Lowell Public Schools to use licensed Asbestos Contractors for all response action work.
2. The AHERA regulation states that the response actions chosen for other than small scale/short duration repairs (less than 3 square or linear feet), must be designed and conducted by persons accredited to design and conduct response actions. MADLS Regulation 454 CMR 28.00 requires the services of licensed Project Designers who meet the requirements set forth in 454 CMR 28.00, as well as Massachusetts licensed Asbestos Contractors.
3. Damaged ACMs that involve small scale/short duration repairs can only be conducted by 16-hour asbestos-trained personnel or by a licensed Asbestos Contractor. EFI understands that small scale/ short duration projects will not be performed by in house personnel, and that all work will be conducted by an outside licensed Asbestos Contractor.
4. Each known and assumed ACM should be monitored for any changes in condition during the six-month periodic surveillance, or more frequently.
5. If known or suspect ACMs are to be impacted by planned renovation or demolition activities, the ACM must be removed by a Massachusetts licensed Asbestos Contractor. Note that AHERA inspections do not meet the EPA NESHAP and Commonwealth of Massachusetts Department of Environmental Protection (MADEP) requirements for a comprehensive pre-renovation or demolition survey. Prior to any planned renovation or demolition project, all renovation/demolition areas must be thoroughly surveyed to meet the requirements of EPA NESHAP and MADEP 310 CMR 7.15(4) Survey Requirements. LEA Designated Persons should make sure that pre-renovation/demolition surveys are performed in each instance that ACM may be disturbed.

E. AHERA Licensing & Training Documentation

The AHERA 3-year Reinspection report for The Career Academy (Formerly HJ Malloy Alternative School) was performed by the following individuals who have received appropriate training and who are MADLS licensed personnel:



Michael McCarter
Senior Project Manager
MA Asbestos Inspector # AI 001825



Jennifer L. Archacki
Environmental Service Line Principal
MA Asbestos Management Planner #AP 033118

F. Asbestos Bulk Sampling

Asbestos bulk sampling of suspect ACM was performed for various suspect ACMs not previously identified as ACM in portions of the building included in the AHERA program. The bulk sampling was performed by USEPA-accredited, and MADLS licensed Asbestos Inspector Michael McCarter. A total of 52 bulk samples of suspect ACMs were collected and transported under chain of custody protocol to EMSL Analytical, Inc., of Woburn, Massachusetts, a Massachusetts-licensed laboratory. EMSL is accredited by the National Voluntary Laboratory Accreditation Program (NVLAP) for bulk asbestos fiber analysis, which is administered by the National Institute of Standards and Testing (NIST).

Samples were analyzed with a standard 3-day turnaround time using polarized light microscopy (PLM) in accordance with United States Environmental Protection Agency (USEPA) Method 600/R-93/116. The PLM/DS analytical method is modeled after 40 CFR Part 763, Subpart F, Attachment A: "Interim Method for the Determination of Asbestos in Bulk Insulation Samples." MADEP asbestos regulations define an ACM as any material containing greater than or equal to one percent asbestos. The findings of this report are based upon observations of accessible materials and the analysis of representative bulk samples collected. **Attachment C** contains site plans indicating locations of samples collected and analyzed as part of this reinspection. A copy of the asbestos laboratory reports is presented in **Attachment D**.

Bulk samples representing individual homogenous areas of suspect ACM, (materials that are determined to be uniform in color and texture and installed in the same construction period) were collected in a randomly distributed manner, in accordance with the EPA sampling protocol outlined in 40 CFR 763.

The following suspect ACMs sampled by EFI during the 2024 reinspection were reported by EMSL as containing no detectable concentration of asbestos:

Summary of Non-ACMs per 2024 3-Year Reinspection

Material Description	Location(s) Sampled
Gypsum board	Basement Electric Closet, 2nd Floor North Stair Storage
Joint Compound	Basement Electric Closet, 2nd Floor North Stair Storage
Gray vinyl cove base adhesive	Basement Hall, Basement Guidance Councilor
Black vinyl cove base adhesive	Basement Hall, Basement Industrial Arts
2' x 4' Fissure ceiling tile (old)	Basement Stage Exit East Side, 1 st Floor Teachers
2' x 4' Fissure ceiling tile (newer)	Basement Stage Exit East Side, 1 st Floor Teachers

Material Description	Location(s) Sampled
Plaster Finish Coat	Basement Stage, Basement Stage Storage East Side, Basement Stair at Horn Street, 1 st Floor Stair at Horn Street, 1 st Floor Hall, 1 st Floor Principal, 2 nd Floor Hall,
Plaster Base Coat	Basement Stage, Basement Stage Storage East Side, Basement Stair at Horn Street, 1 st Floor Stair at Horn Street, 1 st Floor Hall, 1 st Floor Principal, 2 nd Floor Hall,
Ceramic floor tile grout	Basement Boys Room
2' x 2' ceiling tile	1 st Floor Nurse
Fiberboard wall panels	1 st Floor Nurse, 1 st Floor Room 3
12" x 12" gray floor tile	1 st Floor Library
12" x 12" gray floor tile mastic	1 st Floor Library
12" x 12" tan floor tile	1 st Floor Teachers
12" x 12" blue floor tile	1 st Floor Teachers
12" x 12" green floor tile	1 st Floor Teachers
Floor tile mastic associated with 12" x 12" tan, blue and green floor tiles	1 st Floor Teachers
1' x 1' ceiling tile (nailed on)	1 st Floor Teachers
Carpet adhesive, tan	1 st Floor Office, 1 st Floor Principal
Brown linoleum (under carpet)	1 st Floor Office, 1 st Floor Principal
Brown linoleum mastic	1 st Floor Office, 1 st Floor Principal

G. ACM Hazard Assessment & Recommended Response Actions

Accessible locations were inspected and assessed to determine the presence and condition of known and assumed ACM. A Summary Table of known and assumed ACMs present at the school, the physical and hazard assessments and the recommended response action for each ACM, is presented in **Attachment A**. It should be noted that EFI did not conduct destructive evaluations of the school building to identify suspect ACM. Per USEPA NESHAP and MADEP asbestos regulations, a thorough "path of construction" survey should be conducted prior to any renovation or repair activities that may impact suspect ACM, regardless of the date of installation.

H. Cost Estimate and Schedule for Recommended Response Actions

The confirmed and assumed ACMs outlined in the summary table in **Attachment A** that were in good condition at the time of the reinspection must be maintained in place in accordance with the Operations and Maintenance Plan. Estimated costs associated with managing known and assumed ACMs at the school are summarized below.

Cost Estimate of AHERA Considerations The Career Academy (Formerly HJ Malloy Alternative School) 125 Smith Street, Lowell, Massachusetts	
Training Costs	
Item	Approximate Cost
2-hour asbestos awareness training (New Hires, within 60 days of hire)	\$500/person

Designated Person Training	\$250
Maintenance Costs	
Item	Approximate Cost
Asbestos labeling (Place/maintain labels adjacent to ACM in routine maintenance areas)	\$500
6-month surveillance inspections (Per schedule below)	\$500/event
3-year reinspection (Per schedule below)	\$2,000
Response Action Costs	
Item	Approximate Cost
Remove pipe insulation in Basement Girls Room noted in the Summary Table of Identified and Assumed ACMs.	\$1,500
AHERA workplan (for all non-Small Scale/Short Duration Work)	\$500/plan
Asbestos Monitoring Costs (dependent on duration of project)	\$600/shift

A proposed schedule of events between this 3-Year reinspection and the 2027 3-Year reinspection is provided for your use:

Schedule of AHERA-Related Actions The Career Academy (Formerly HJ Malloy Alternative School) 125 Smith Street, Lowell, Massachusetts	
Event	Completion Date
Remove pipe insulation in Basement Girls Room	June 23, 2024
6 Month Surveillance Inspection	August 23, 2024
Annual Parental Notification Letter	September 1, 2024
6 Month Surveillance Inspection	February 23, 2025
6 Month Surveillance Inspection	August 23, 2025
Annual Parental Notification Letter	September 1, 2025
6 Month Surveillance Inspection	February 23, 2026
6 Month Surveillance Inspection	August 23, 2026
Annual Parental Notification Letter	September 1, 2026
3 Year Reinspection	February 23, 2027

ATTACHMENT A

AHERA SUMMARY TABLE

AHERA 3 Year Re-Inspection Summary Table
 The Career Academy (Formerly HJ Malloy Alternative School)
 Summary Table of Identified and Assumed Asbestos-Containing Building Materials
 125 Smith Street, Lowell, MA
 Date of Inspection: 2/23/2024

Material Description	Location	Quantity	Friability (F/NF)	Sample Results	Assessment Category	Condition	Response Actions/ Notes	Recommended Completion Date
Sprinkler pipe thread sealant (material added in 2024)	Basement, 1 st Floor 2 nd Floor	200 SF	NF	Not Sampled. Assumed ACM	5	Good	Material was observed to be exposed above and below suspended ceilings. Manage in place in accordance with the Asbestos O&M Program. Collect bulk samples to determine asbestos content prior to any disturbance.	
Fire doors with interior linings (material added in 2024)	Basement, 1 st Floor 2 nd Floor	120 Each	NF	Not Sampled. Interior linings assumed ACM.	5	Good	Interior linings associated with fire doors are assumed to contain asbestos. Maintain the fire doors in good condition in accordance with the Asbestos O&M Program. Prior to disturbance, inspect the doors for suspect ACM lining insulation and collect bulk samples to determine asbestos content.	
Interior door and partition wall window glazing compound – various types (material added in 2024)	Basement, 1 st Floor 2 nd Floor	100 Each	NF	Not sampled. Assumed ACM.	5	Good	Manage in place in accordance with the Asbestos O&M Program. Collect bulk samples to determine asbestos content prior to any disturbance.	
Window/door caulk – various types (material added in 2024)	Exterior windows and doors	95 Each	NF	Not sampled. Assumed ACM	5	Good	Material was observed to be located on interior and or exterior side of windows and doors. Manage in place in accordance with the Asbestos O&M Program. Collect bulk samples to determine asbestos content prior to any disturbance.	
Window/door window glazing compounds – various types (material added in 2024)	Exterior windows and doors	95 Each	NF	Not sampled. Assumed ACM	5	Good	Material was observed to be located on interior and or exterior side of windows and doors. Manage in place in accordance with the Asbestos O&M Program. Collect bulk samples to determine asbestos content prior to any disturbance.	
Pipe fitting insulation	Basement - North Side Stairwell	1 Elbow	NF	Positive per Management Plan records	6	Good condition, jacketing material is intact	Manage in place in accordance with the Asbestos O&M Program. Routine inspections of ACM for physical damages due to occupancy or other factors can be performed more frequently such as every three months.	
1' x 1' Brown floor tile	Basement – East Side/Smith Street Side Stage Exit	40 SF	NF	Positive per Management Plan records	5	Good condition overall with minor cracking. Tile is intact.	Good condition overall. Tile has minor cracking but is waxed and intact. Monitor to determine condition does not worsen. Manage in place in accordance with the Asbestos O&M Program or replace with new non-ACM flooring. Floor tile should be maintained in accordance with EPA and OSHA guidelines. Strip floors when wet using low abrasive pads and low speed buffers (175- 300 rpm), and regularly clean and maintain flooring with wax coating to maximize longevity.	
Mastic associated with 1' x 1' brown floor tile (material added in 2024)	Basement – East Side/Smith Street Side Stage Exit	40 SF	NF	Not Sampled. Assumed ACM.	N/A	N/A material not accessible for viewing.	Mastic is not visible. Maintain floor tile in good condition in accordance with the O&M Program. Collect bulk samples of the mastic prior to disturbance by any maintenance, renovation, or demolition activity to determine asbestos content.	

AHERA 3 Year Re-Inspection Summary Table
 The Career Academy (Formerly HJ Malloy Alternative School)
 Summary Table of Identified and Assumed Asbestos-Containing Building Materials
 125 Smith Street, Lowell, MA
 Date of Inspection: 2/23/2024

Material Description	Location	Quantity	Friability (F/NF)	Sample Results	Assessment Category	Condition	Response Actions/ Notes	Recommended Completion Date
1' x 1' brown floor tile	Basement – West Side Stage Exit Hall	100 SF	NF	Positive per Management Plan records	5	Good condition overall with minor cracking. Tile is intact.	Good condition overall. Tile has minor cracking but is waxed and intact. Monitor to determine condition does not worsen. Manage in place in accordance with the Asbestos O&M Program or replace with new non-ACM flooring. Floor tile should be maintained in accordance with EPA and OSHA guidelines. Strip floors when wet using low abrasive pads and low speed buffers (175- 300 rpm), and regularly clean and maintain flooring with wax coating to maximize longevity.	
Mastic associated with 1' x 1' brown floor tile (material added in 2024)	Basement – West Side Stage Exit Hall	100 SF	NF	Not Sampled. Assumed ACM.	N/A	N/A material not accessible for viewing.	Mastic is not visible. Maintain floor tile in good condition in accordance with the O&M Program. Collect bulk samples of the mastic prior to disturbance by any maintenance, renovation, or demolition activity to determine asbestos content.	
1' x 1' brown floor tile	Basement – Cafeteria	1,050 SF	NF	Positive per Management Plan records	5	Good condition overall with minor cracking. Tile is intact.	Good condition overall. Tile has minor cracking but is waxed and intact. Monitor to determine condition does not worsen. Manage in place in accordance with the Asbestos O&M Program or replace with new non-ACM flooring. Floor tile should be maintained in accordance with EPA and OSHA guidelines. Strip floors when wet using low abrasive pads and low speed buffers (175- 300 rpm), and regularly clean and maintain flooring with wax coating to maximize longevity.	
Mastic associated with 1' x 1' brown floor tile (material added in 2024)	Basement – Cafeteria	1,050 SF	NF	Not Sampled. Assumed ACM.	N/A	N/A material not accessible for viewing.	Mastic is not visible. Maintain floor tile in good condition in accordance with the O&M Program. Collect bulk samples of the mastic prior to disturbance by any maintenance, renovation, or demolition activity to determine asbestos content.	
Pipe fitting insulation	Basement – Industrial Arts	2 Elbows	NF	Positive per Management Plan records	6	Good condition, jacketing material is intact	Manage in place in accordance with the Asbestos O&M Program. Routine inspections of ACM for physical damages due to occupancy or other factors can be performed more frequently such as every three months.	
Pipe insulation	Basement - Girls Room	5 LF	NF	Positive per Management Plan records	1	Damaged jacket material, no debris observed	Damage appeared to be from repeated contact at access hatch to sump pump. Bathroom is currently used for storage and is not in use. Recommend removal of the material to prevent future disturbance within three months or by June 23, 2024	By June 23, 2024
Ceramic wall and floor tile grout (material added 2024)	Basement - Boys Room (under construction at time of survey)	600 SF	NF	Not Sampled. Assumed ACM.	5	Good	Manage in place in accordance with the Asbestos O&M Program. Collect bulk samples to determine asbestos content prior to any disturbance.	

AHERA 3 Year Re-Inspection Summary Table
 The Career Academy (Formerly HJ Malloy Alternative School)
 Summary Table of Identified and Assumed Asbestos-Containing Building Materials
 125 Smith Street, Lowell, MA
 Date of Inspection: 2/23/2024

Material Description	Location	Quantity	Friability (F/NF)	Sample Results	Assessment Category	Condition	Response Actions/ Notes	Recommended Completion Date
1' x 1' brown floor tile	Basement - Horn Street Entry/Hall	245 SF	NF	Positive per Management Plan records	5	Good condition overall with minor cracking. Tile is intact.	Good condition overall. Tile has minor cracking but is waxed and intact. Monitor to determine condition does not worsen. Manage in place in accordance with the Asbestos O&M Program or replace with new non-ACM flooring. Floor tile should be maintained in accordance with EPA and OSHA guidelines. Strip floors when wet using low abrasive pads and low speed buffers (175- 300 rpm), and regularly clean and maintain flooring with wax coating to maximize longevity.	
Mastic associated with 1' x 1' brown floor tile (material added in 2024)	Basement - Horn Street Entry/Hall	245 SF	NF	Not Sampled. Assumed ACM.	N/A	N/A material not accessible for viewing.	Mastic is not visible. Maintain floor tile in good condition in accordance with the O&M Program. Collect bulk samples of the mastic prior to disturbance by any maintenance, renovation, or demolition activity to determine asbestos content.	
1' x 1' brown floor tile	First Floor – Horn Street Stair/Hall	245 SF	NF	Positive per Management Plan records	5	Good condition overall with minor cracking. Tile is intact.	Good condition overall. Tile has minor cracking but is waxed and intact. Monitor to determine condition does not worsen. Manage in place in accordance with the Asbestos O&M Program or replace with new non-ACM flooring. Floor tile should be maintained in accordance with EPA and OSHA guidelines. Strip floors when wet using low abrasive pads and low speed buffers (175- 300 rpm), and regularly clean and maintain flooring with wax coating to maximize longevity.	
Mastic associated with 1' x 1' brown floor tile (material added in 2024)	First Floor – Horn Street Stair/Hall	245 SF	NF	Not Sampled. Assumed ACM.	N/A	N/A material not accessible for viewing.	Mastic is not visible. Maintain floor tile in good condition in accordance with the O&M Program. Collect bulk samples of the mastic prior to disturbance by any maintenance, renovation, or demolition activity to determine asbestos content.	
1' x 1' brown floor tile	First Floor – Copy Room/Nurse	65 SF	NF	Positive per Management Plan records	5	Good condition overall with minor cracking. Tile is intact.	Good condition overall. Tile has minor cracking but is waxed and intact. Monitor to determine condition does not worsen. Manage in place in accordance with the Asbestos O&M Program or replace with new non-ACM flooring. Floor tile should be maintained in accordance with EPA and OSHA guidelines. Strip floors when wet using low abrasive pads and low speed buffers (175- 300 rpm), and regularly clean and maintain flooring with wax coating to maximize longevity.	
Mastic associated with 1' x 1' brown floor tile (material added in 2024)	First Floor –Copy Room/Nurse	65 SF	NF	Not Sampled. Assumed ACM.	N/A	N/A material not accessible for viewing.	Mastic is not visible. Maintain floor tile in good condition in accordance with the O&M Program. Collect bulk samples of the mastic prior to disturbance by any maintenance, renovation, or demolition activity to determine asbestos content.	
9" x 9" Green floor tile (under non-ACM 12" x 12" blue floor tile and associated mastic) (material added 2024)	First Floor - Library	700 SF	NA	Not Sampled. Assumed ACM	NA	N/A material not accessible for viewing.	Observed at entrance to room where a piece of non-ACM 12" x 12" Blue Floor Tile is missing. Maintain non-ACM floor tile in good condition. Collect bulk samples to determine asbestos content of underlying tile prior to disturbance.	

AHERA 3 Year Re-Inspection Summary Table
 The Career Academy (Formerly HJ Malloy Alternative School)
 Summary Table of Identified and Assumed Asbestos-Containing Building Materials
 125 Smith Street, Lowell, MA
 Date of Inspection: 2/23/2024

Material Description	Location	Quantity	Friability (F/NF)	Sample Results	Assessment Category	Condition	Response Actions/ Notes	Recommended Completion Date
9" x 9" green floor tile mastic (under non-ACM 12" x 12" blue floor tile and associated Mastic) (material added 2024)	First Floor – Library	700 SF	NA	Not Sampled. Assumed ACM	NA	N/A material not accessible for viewing.	Mastic is not visible. Maintain floor tile in good condition in accordance with the O&M Program. Collect bulk samples to determine asbestos content of underlying mastic prior to disturbance.	
Pipe fitting insulation	First Floor – Room 3	6 Elbows	NF	Positive per Management Plan records	6	Good, jacketing material intact	Manage in place in accordance with the Asbestos O&M Program. Routine inspections of ACM for physical damages due to occupancy or other factors can be performed more frequently such as every three months.	
Pipe fitting insulation	First Floor – Principal's Office	2 Elbows	NF	Positive per Management Plan records	6	Good, jacketing material intact	Manage in place in accordance with the Asbestos O&M Program. Routine inspections of ACM for physical damages due to occupancy or other factors can be performed more frequently such as every three months.	
9" x 9" blue floor tile	First Floor – Principal's Office Storage	65 SF	NF	Positive per Management Plan records	5	Good condition overall with minor cracking. Tile is intact.	Good condition overall. Tile has minor cracking but is waxed and intact. Monitor to determine condition does not worsen. Manage in place in accordance with the Asbestos O&M Program or replace with new non-ACM flooring. Floor tile should be maintained in accordance with EPA and OSHA guidelines. Strip floors when wet using low abrasive pads and low speed buffers (175- 300 rpm), and regularly clean and maintain flooring with wax coating to maximize longevity.	
9" x 9" blue floor tile mastic (material added 2024)	First Floor – Principal's Office Storage	65 SF	NF	Not Sampled. Assumed ACM.	N/A	N/A material not accessible for viewing.	Mastic is not visible. Maintain floor tile in good condition in accordance with the O&M Program. Collect bulk samples of the mastic prior to disturbance by any maintenance, renovation, or demolition activity to determine asbestos content.	
9" x 9" green floor tile	First Floor – Principal's Office Restroom	15 SF	NF	Positive per Management Plan records	5	Good condition overall with minor cracking. Tile is intact.	Good condition overall. Tile has minor cracking but is waxed and intact. Monitor to determine condition does not worsen. Manage in place in accordance with the Asbestos O&M Program or replace with new non-ACM flooring. Floor tile should be maintained in accordance with EPA and OSHA guidelines. Strip floors when wet using low abrasive pads and low speed buffers (175- 300 rpm), and regularly clean and maintain flooring with wax coating to maximize longevity.	
9" x 9" green floor tile mastic (material added 2024)	First Floor – Principal's Office Restroom	15 SF	NF	Not Sampled. Assumed ACM.	N/A	N/A material not accessible for viewing.	Mastic is not visible. Maintain floor tile in good condition in accordance with the O&M Program. Collect bulk samples of the mastic prior to disturbance by any maintenance, renovation, or demolition activity to determine asbestos content.	

AHERA 3 Year Re-Inspection Summary Table
 The Career Academy (Formerly HJ Malloy Alternative School)
 Summary Table of Identified and Assumed Asbestos-Containing Building Materials
 125 Smith Street, Lowell, MA
 Date of Inspection: 2/23/2024

Material Description	Location	Quantity	Friability (F/NF)	Sample Results	Assessment Category	Condition	Response Actions/ Notes	Recommended Completion Date
1' x 1' brown floor tile	First Floor- North Side Stair/Hall	245 SF	NF	Positive per Management Plan records	5	Good condition overall with minor cracking. Tile is intact.	Good condition overall. Tile has minor cracking but is waxed and intact. Monitor to determine condition does not worsen. Manage in place in accordance with the Asbestos O&M Program or replace with new non-ACM flooring. Floor tile should be maintained in accordance with EPA and OSHA guidelines. Strip floors when wet using low abrasive pads and low speed buffers (175- 300 rpm), and regularly clean and maintain flooring with wax coating to maximize longevity.	
Mastic associated with 1' x 1' brown floor tile (material added in 2024)	First Floor- North Side Stair/Hall	245 SF	NF	Not Sampled. Assumed ACM.	N/A	N/A material not accessible for viewing.	Mastic is not visible. Maintain floor tile in good condition in accordance with the O&M Program. Collect bulk samples of the mastic prior to disturbance by any maintenance, renovation, or demolition activity to determine asbestos content.	
Pipe fitting insulation	Second Floor - North Side Stair/Hall	1 Elbow	NF	Positive per Management Plan records	6	Good, jacketing material intact	Manage in place in accordance with the Asbestos O&M Program. Pipe fittings that are easily accessible to students should be inspected regularly, such as every 2-3 weeks, by trained maintenance personnel.	
1' x 1' brown floor tile	Second Floor - North Side Stair/Hall	245 SF	NF	Positive per Management Plan records	5	Good condition overall with minor cracking. Tile is intact.	Good condition overall. Tile has minor cracking but is waxed and intact. Monitor to determine condition does not worsen. Manage in place in accordance with the Asbestos O&M Program or replace with new non-ACM flooring. Floor tile should be maintained in accordance with EPA and OSHA guidelines. Strip floors when wet using low abrasive pads and low speed buffers (175- 300 rpm), and regularly clean and maintain flooring with wax coating to maximize longevity.	
Mastic associated with 1' x 1' brown floor tile (material added in 2024)	Second Floor - North Side Stair/Hall	245 SF	NF	Not Sampled. Assumed ACM.	N/A	N/A material not accessible for viewing.	Mastic is not visible. Maintain floor tile in good condition in accordance with the O&M Program. Collect bulk samples of the mastic prior to disturbance by any maintenance, renovation, or demolition activity to determine asbestos content.	
Pipe fitting insulation	Second Floor -Room 11	1 Elbow	NF	Positive per Management Plan records	6	Good, jacketing material intact	Manage in place in accordance with the Asbestos O&M Program. Pipe fittings that are easily accessible to students should be inspected regularly, such as every 2-3 weeks, by trained maintenance personnel.	
1' x 1' brown floor tile	Second Floor – Horn Street Stair/Hall	245 SF	NF	Positive per Management Plan records	5	Good condition overall with minor cracking. Tile is intact.	Good condition overall. Tile has minor cracking but is waxed and intact. Monitor to determine condition does not worsen. Manage in place in accordance with the Asbestos O&M Program or replace with new non-ACM flooring. Floor tile should be maintained in accordance with EPA and OSHA guidelines. Strip floors when wet using low abrasive pads and low speed buffers (175- 300 rpm), and regularly clean and maintain flooring with wax coating to maximize longevity.	

AHERA 3 Year Re-Inspection Summary Table
The Career Academy (Formerly HJ Malloy Alternative School)
Summary Table of Identified and Assumed Asbestos-Containing Building Materials
125 Smith Street, Lowell, MA
Date of Inspection: 2/23/2024

Material Description	Location	Quantity	Friability (F/NF)	Sample Results	Assessment Category	Condition	Response Actions/ Notes	Recommended Completion Date
Mastic associated with 1' x 1' brown floor tile (material added in 2024)	Second Floor – Horn Street Stair/Hall	245 SF	NF	Not Sampled. Assumed ACM.	N/A	N/A material not accessible for viewing.	Mastic is not visible. Maintain floor tile in good condition in accordance with the O&M Program. Collect bulk samples of the mastic prior to disturbance by any maintenance, renovation, or demolition activity to determine asbestos content.	

LF = Linear Feet

SF = Square Feet

Assumed ACM = This material was not identified in the Management Plan records and was not sampled during the 2024 Re-inspection. Prior to any planned disturbance by maintenance, renovation, or demolition activities, EFI recommends bulk sampling and analysis to determine asbestos content.

For all recommended response actions, the work should be conducted by a Massachusetts licensed Asbestos Contractor and a work plan for the specific repair or removal activity should be prepared by a Massachusetts licensed Asbestos Designer.

Physical Assessment Category
1 – Damaged or Significantly Damaged Thermal System ACM
2 – Damaged Friable Surfacing ACM
3 – Significantly Damaged Surfacing ACM
4 – Damaged or Significantly Damaged Friable Miscellaneous ACM
5 – ACM with Potential for Damage
6 – ACM with Potential for Significant Damage
7 – Any Remaining friable ACM or friable suspect ACM

ATTACHMENT B

SITE PLANS

2 ← 3



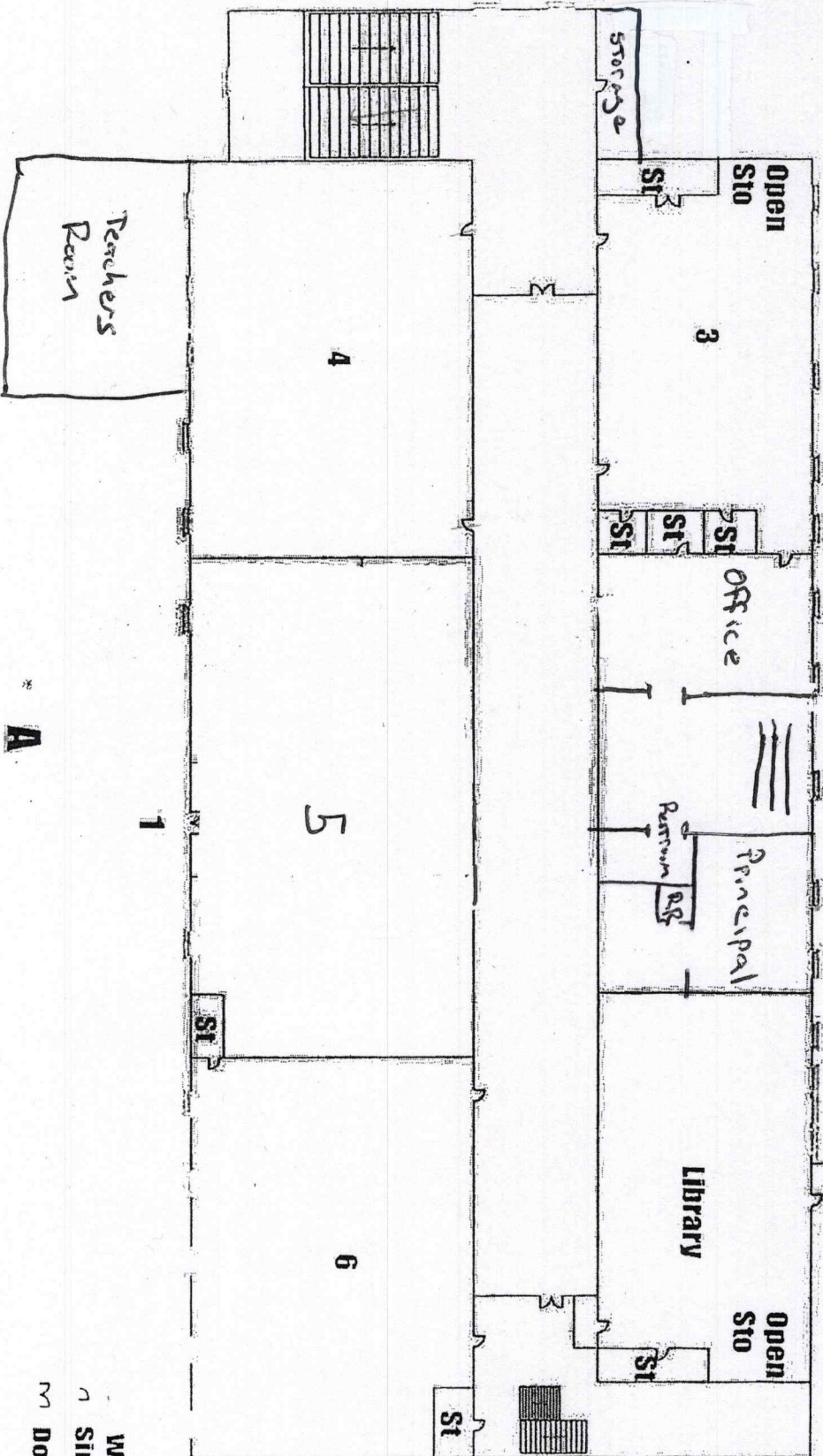
First Floor

2 3 5

C

B

D



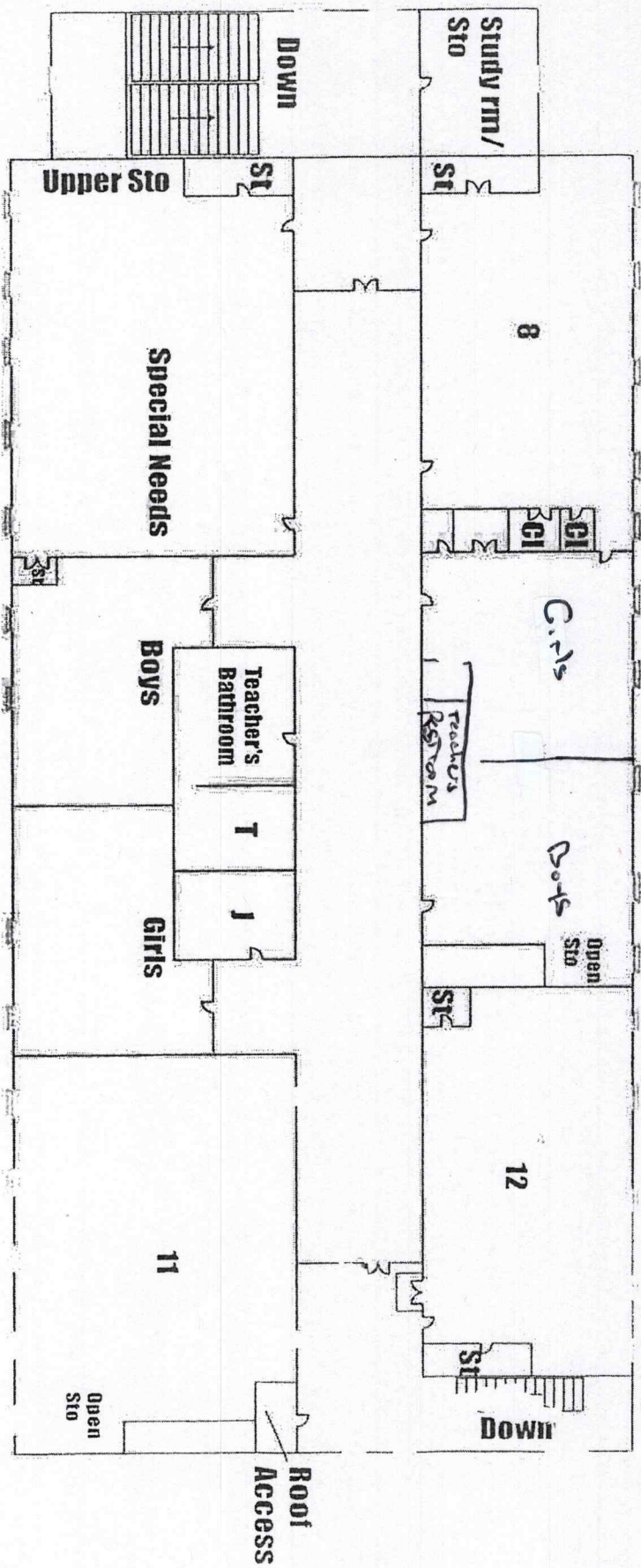
A

Window
Single Door
Double Door

Second Floor

2 1/2 3

C



A

Window
Single Do
Double Dr

ATTACHMENT C

2024 REINSPECTION ASBESTOS BULK SAMPLE LOCATION PLANS

Basement Floor

N
E
W
S

SM. ST

C

B
Fire
Alarm

Elec

01A
02A

2

St
01B
01C
01D

3

05A
06A

Ramp

Cafeteria

Folding wall

Girls

St

6

Old Stage

07A
08A

Sto

03A

Guidance
Counselor

04A

Industrial
Arts

04B

Boys

09A
10B

07C
08C

To 2 ST

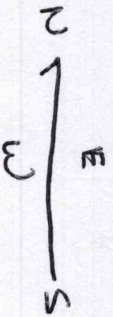
D

A

Boiler
Room

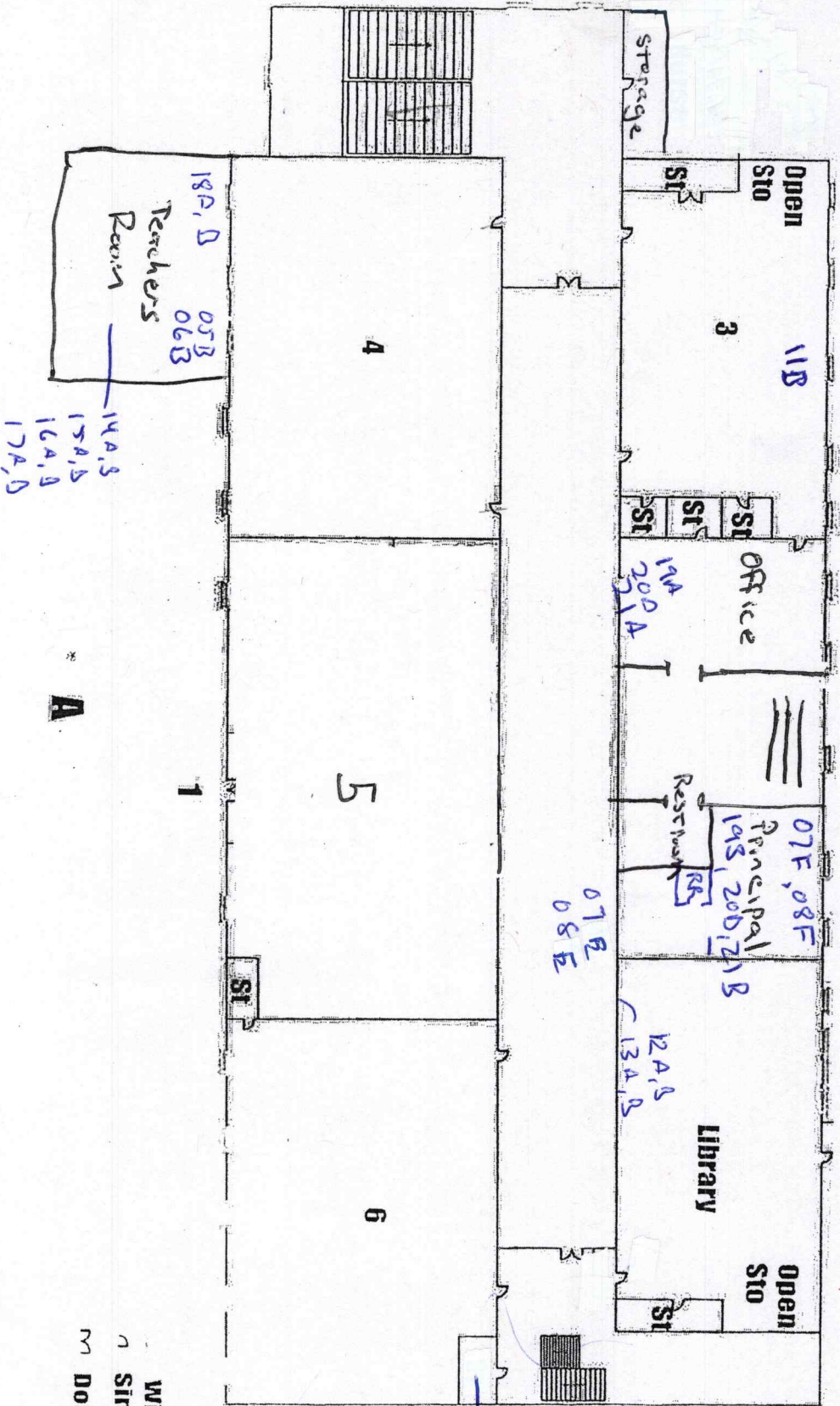
Window
Single Door
Double Door

First Floor



C

SMITH ST



18A, B
Teachers
Room
05B
06B
14A, B
15A, B
16A, B
17A, B

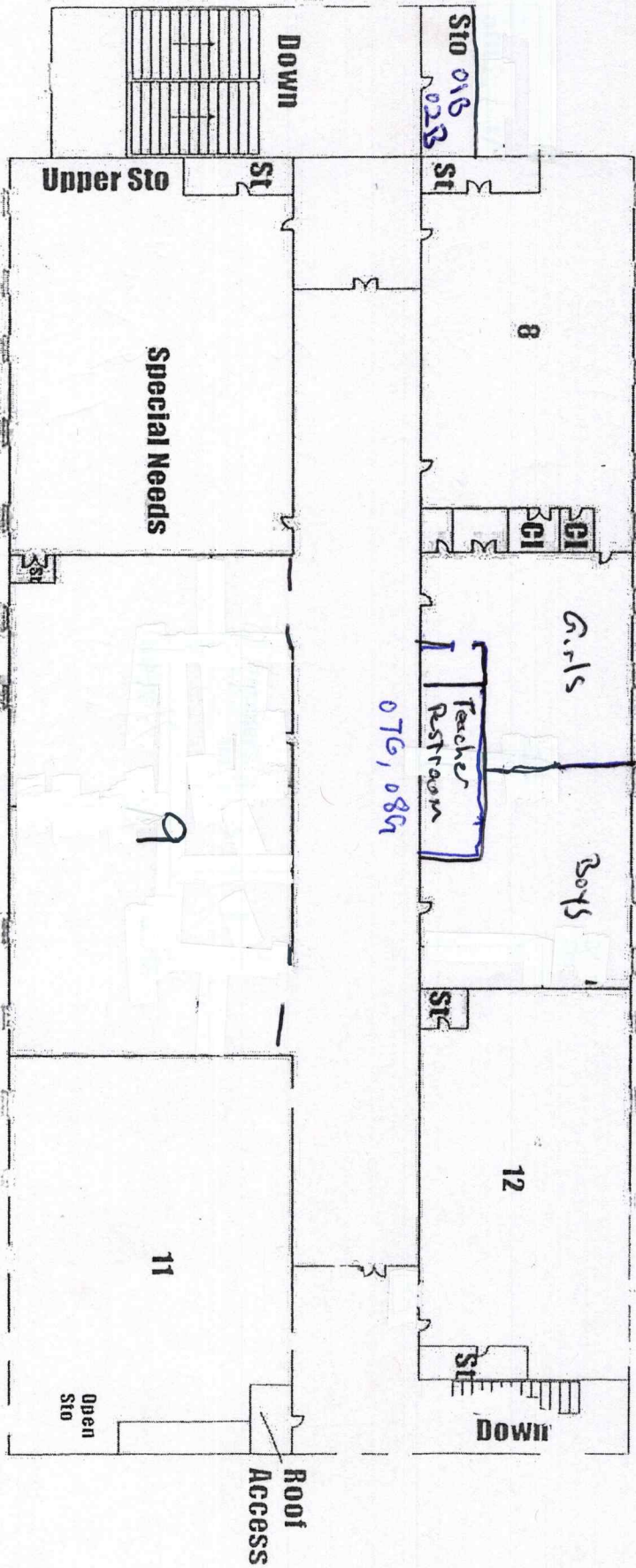
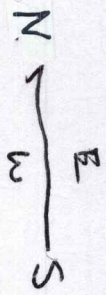
A

Window
Single Door
Double Door

Nurse
10A, B
11A
Horn
07D
08D
ST

D

Second Floor



A

Window
Single Do
Double Do

ATTACHMENT D

2024 REINSPECTION ASBESTOS BULK SAMPLE REPORTS



EMSL Analytical, Inc.

5 Constitution Way, Unit A Woburn, MA 01801

Tel/Fax: (781) 933-8411 / (781) 933-8412

<http://www.EMSL.com> / bostonlab@emsl.com

EMSL Order: 132401081

Customer ID: EAF166

Customer PO:

Project ID:

Attention: Michael McCarter

EFI Global, Inc.

155 West Street

Suite 6

Wilmington, MA 01887

Project: 014.07795 - Career Academy

Phone: (978) 688-3736

Fax: (978) 688-5494

Received Date: 02/23/2024 12:10 PM

Analysis Date: 02/27/2024 - 02/28/2024

Collected Date: 02/23/2024

Test Report: Asbestos Analysis of Bulk Materials via AHERA Method 40CFR 763 Subpart E Appendix E supplemented with EPA 600/R-93/116 using Polarized Light Microscopy

Sample	Description	Appearance	Non-Asbestos		Asbestos
			% Fibrous	% Non-Fibrous	% Type
01A 132401081-0001	Basement - Electric Closet - Gypsum Board	Tan/White Fibrous Homogeneous	10% Cellulose	90% Non-fibrous (Other)	None Detected
01B 132401081-0002	2nd - North Stair Storage - Gypsum Board	Tan/White Fibrous Homogeneous	10% Cellulose	90% Non-fibrous (Other)	None Detected
02A 132401081-0003	Basement - Electric Closet - Joint Compound	White Non-Fibrous Homogeneous		100% Non-fibrous (Other)	None Detected
02B 132401081-0004	2nd - North Stair Storage - Joint Compound	White Non-Fibrous Homogeneous		100% Non-fibrous (Other)	None Detected
03A 132401081-0005	Basement Hall - Gray Vinyl Cove Base Adhesive	Brown Non-Fibrous Homogeneous		100% Non-fibrous (Other)	None Detected
03B 132401081-0006	Basement Guidance- Gray Vinyl Cove Base Adhesive	Brown Non-Fibrous Homogeneous		100% Non-fibrous (Other)	None Detected
04A 132401081-0007	Basement Hall - Black Vinyl Cove Base Adhesive	Brown Non-Fibrous Homogeneous		100% Non-fibrous (Other)	None Detected
04B 132401081-0008	Basement Industrial Arts - Black Vinyl Cove Base Adhesive	Brown Non-Fibrous Homogeneous		100% Non-fibrous (Other)	None Detected
05A 132401081-0009	Basement - Stage Exit East Side - 2x4 Fissured Ceiling Tile (Old)	Gray/White Non-Fibrous Homogeneous	55% Cellulose 20% Min. Wool	25% Non-fibrous (Other)	None Detected
05B 132401081-0010	1st - Teachers - 2x4 Fissured Ceiling Tile (Old)	Gray/White Fibrous Homogeneous	55% Cellulose 20% Min. Wool	25% Non-fibrous (Other)	None Detected
06A 132401081-0011	Basement - Stage Exit East Side - 2x4 Fissured Ceiling Tile (Newer)	Gray Fibrous Homogeneous	8% Cellulose 75% Min. Wool	17% Non-fibrous (Other)	None Detected
06B 132401081-0012	1st - Teachers - 2x4 Fissured Ceiling Tile (Newer)	Gray Fibrous Homogeneous	8% Cellulose 75% Min. Wool	17% Non-fibrous (Other)	None Detected
07A 132401081-0013	Basement - Stage - Plaster Finish Coat	White Non-Fibrous Homogeneous		100% Non-fibrous (Other)	None Detected
07B 132401081-0014	Basement - Stage Storage East Side - Plaster Finish Coat	White Non-Fibrous Homogeneous		100% Non-fibrous (Other)	None Detected
07C 132401081-0015	Basement - Horn Street Side Stair - Plaster Finish Coat	White Non-Fibrous Homogeneous		100% Non-fibrous (Other)	None Detected

Initial report from: 02/28/2024 07:05:50



EMSL Analytical, Inc.

5 Constitution Way, Unit A Woburn, MA 01801

Tel/Fax: (781) 933-8411 / (781) 933-8412

<http://www.EMSL.com / bostonlab@emsl.com>

EMSL Order: 132401081

Customer ID: EAFI66

Customer PO:

Project ID:

Test Report: Asbestos Analysis of Bulk Materials via AHERA Method 40CFR 763 Subpart E Appendix E supplemented with EPA 600/R-93/116 using Polarized Light Microscopy

Sample	Description	Appearance	Non-Asbestos		Asbestos
			% Fibrous	% Non-Fibrous	% Type
07D 132401081-0016	1st Floor - Horn Street Side Stair - Plaster Finish Coat	White Non-Fibrous Homogeneous		100% Non-fibrous (Other)	None Detected
07E 132401081-0017	1st Floor - Hall - Plaster Finish Coat	White Non-Fibrous Homogeneous		100% Non-fibrous (Other)	None Detected
07F 132401081-0018	1st Floor - Principal - Plaster Finish Coat	White Non-Fibrous Homogeneous		100% Non-fibrous (Other)	None Detected
07G 132401081-0019	2nd Floor - Hall - Plaster Finish Coat	White Non-Fibrous Homogeneous		100% Non-fibrous (Other)	None Detected
08A 132401081-0020	Basement - Stage - Plaster Base Coat	Gray Fibrous Homogeneous	<1% Cellulose	100% Non-fibrous (Other)	None Detected
08B 132401081-0021	Basement - Stage Storage East Side - Plaster Base Coat	Gray Fibrous Homogeneous	<1% Cellulose	100% Non-fibrous (Other)	None Detected
08C 132401081-0022	Basement - Horn Street Side Stair - Plaster Base Coat	Gray Fibrous Homogeneous	<1% Cellulose	100% Non-fibrous (Other)	None Detected
08D 132401081-0023	1st Floor - Horn Street Side Stair - Plaster Base Coat	Gray Fibrous Homogeneous	<1% Cellulose	100% Non-fibrous (Other)	None Detected
08E 132401081-0024	1st Floor - Hall - Plaster Base Coat	Gray Fibrous Homogeneous	<1% Cellulose	100% Non-fibrous (Other)	None Detected
08F 132401081-0025	1st Floor - Principal - Plaster Base Coat	Gray Fibrous Homogeneous	<1% Cellulose	100% Non-fibrous (Other)	None Detected
08G 132401081-0026	2nd Floor - Hall - Plaster Base Coat	Gray Fibrous Homogeneous	<1% Cellulose	100% Non-fibrous (Other)	None Detected
09A 132401081-0027	Basement Boys Room - Ceramic Floor Tile Grout	Tan Non-Fibrous Homogeneous		100% Non-fibrous (Other)	None Detected
09B 132401081-0028	Basement Boys Room - Ceramic Floor Tile Grout	Tan Non-Fibrous Homogeneous		100% Non-fibrous (Other)	None Detected
10A 132401081-0029	1st Floor Nurse - 2x4 Ceiling Tile	Gray/White Fibrous Homogeneous	55% Cellulose 20% Min. Wool	25% Non-fibrous (Other)	None Detected
10B 132401081-0030	1st Floor Nurse - 2x4 Ceiling Tile	Gray/White Fibrous Homogeneous	55% Cellulose 20% Min. Wool	25% Non-fibrous (Other)	None Detected
11A 132401081-0031	1st Floor - Nurse - Fiberboard Wall Panels	Gray Fibrous Homogeneous	99% Cellulose	1% Non-fibrous (Other)	None Detected
11B 132401081-0032	1st Floor - Room 3 - Fiberboard Wall Panels	Gray Fibrous Homogeneous	99% Cellulose	1% Non-fibrous (Other)	None Detected
12A 132401081-0033	1st Floor - Library - 12x12 Gray Floor Tile	Gray Non-Fibrous Homogeneous		100% Non-fibrous (Other)	None Detected
12B 132401081-0034	1st Floor - Library - 12x12 Gray Floor Tile	Gray Non-Fibrous Homogeneous		100% Non-fibrous (Other)	None Detected

Initial report from: 02/28/2024 07:05:50



EMSL Analytical, Inc.

5 Constitution Way, Unit A Woburn, MA 01801

Tel/Fax: (781) 933-8411 / (781) 933-8412

<http://www.EMSL.com / bostonlab@emsl.com>

EMSL Order: 132401081

Customer ID: EAFI66

Customer PO:

Project ID:

Test Report: Asbestos Analysis of Bulk Materials via AHERA Method 40CFR 763 Subpart E Appendix E supplemented with EPA 600/R-93/116 using Polarized Light Microscopy

Sample	Description	Appearance	Non-Asbestos		Asbestos
			% Fibrous	% Non-Fibrous	% Type
13A 132401081-0035	1st Floor - Library - 12x12 Gray Floor Tile, Mastic	Tan Non-Fibrous Homogeneous		100% Non-fibrous (Other)	None Detected
13B 132401081-0036	1st Floor - Library - 12x12 Gray Floor Tile, Mastic	Tan Non-Fibrous Homogeneous		100% Non-fibrous (Other)	None Detected
14A 132401081-0037	1st Floor - Teachers - 12x12 Tan FT	Tan/White Non-Fibrous Homogeneous		100% Non-fibrous (Other)	None Detected
14B 132401081-0038	1st Floor - Teachers - 12x12 Tan FT	Tan Non-Fibrous Homogeneous		100% Non-fibrous (Other)	None Detected
15A 132401081-0039	1st Floor - Teachers - 12x12 Blue FT	Blue Non-Fibrous Homogeneous		100% Non-fibrous (Other)	None Detected
15B 132401081-0040	1st Floor - Teachers - 12x12 Blue FT	Blue Non-Fibrous Homogeneous		100% Non-fibrous (Other)	None Detected
16A 132401081-0041	1st Floor - Teachers - 12x12 Green FT	Green Non-Fibrous Homogeneous		100% Non-fibrous (Other)	None Detected
16B 132401081-0042	1st Floor - Teachers - 12x12 Green FT	Green Non-Fibrous Homogeneous		100% Non-fibrous (Other)	None Detected
17A 132401081-0043	1st Floor - Teachers - FT Mastic assoc. w. #14, 15, 16	Tan Non-Fibrous Homogeneous		100% Non-fibrous (Other)	None Detected
17B 132401081-0044	1st Floor - Teachers - FT Mastic assoc. w. #14, 15, 16	Tan Non-Fibrous Homogeneous		100% Non-fibrous (Other)	None Detected
18A 132401081-0045	1st Floor - Teachers - 1x1 Ceiling Tile (Nailed On)	Brown/White Fibrous Homogeneous	95% Cellulose	5% Non-fibrous (Other)	None Detected
18B 132401081-0046	1st Floor - Teachers - 1x1 Ceiling Tile (Nailed On)	Brown/White Fibrous Homogeneous	95% Cellulose	5% Non-fibrous (Other)	None Detected
19A 132401081-0047	1st Floor - Office - Carpet Adhesive, Tan	Tan Non-Fibrous Homogeneous		100% Non-fibrous (Other)	None Detected
19B 132401081-0048	1st Floor - Principal - Carpet Adhesive, Tan	Tan Non-Fibrous Homogeneous		100% Non-fibrous (Other)	None Detected
20A 132401081-0049	1st Floor - Office - Brown Linoleum	Brown/Tan Fibrous Homogeneous	18% Cellulose 2% Synthetic	80% Non-fibrous (Other)	None Detected
20B 132401081-0050	1st Floor - Restroom - Brown Linoleum	Brown/Tan Fibrous Homogeneous	18% Cellulose 2% Synthetic	80% Non-fibrous (Other)	None Detected
21A 132401081-0051	1st Floor - Office - Brown Linoleum - Mastic	Tan Non-Fibrous Homogeneous		100% Non-fibrous (Other)	None Detected
21B 132401081-0052	1st Floor - Restroom - Brown Linoleum - Mastic	Tan Non-Fibrous Homogeneous		100% Non-fibrous (Other)	None Detected

Initial report from: 02/28/2024 07:05:50



EMSL Analytical, Inc.

5 Constitution Way, Unit A Woburn, MA 01801

Tel/Fax: (781) 933-8411 / (781) 933-8412

<http://www.EMSL.com> / bostonlab@emsl.com

EMSL Order: 132401081

Customer ID: EAFI66

Customer PO:

Project ID:

Analyst(s)

Ramon Buenaventura (51)

Steve Grise, Laboratory Manager
or Other Approved Signatory

EMSL maintains liability limited to cost of analysis. Interpretation and use of test results are the responsibility of the client. This report relates only to the samples reported above, and may not be reproduced, except in full, without written approval by EMSL. EMSL bears no responsibility for sample collection activities or analytical method limitations. The report reflects the samples as received. Results are generated from the field sampling data (sampling volumes and areas, locations, etc.) provided by the client on the Chain of Custody. Samples are within quality control criteria and met method specifications unless otherwise noted. The above analyses were performed in general compliance with Appendix E to Subpart E of 40 CFR (previously EPA 600/M4-82-020 "Interim Method") but augmented with procedures outlined in the 1993 ("final") version of the method. This report must not be used by the client to claim product certification, approval, or endorsement by NVLAP, NIST or any agency of the federal government. Non-friable organically bound materials present a problem matrix and therefore EMSL recommends gravimetric reduction prior to analysis. Unless requested by the client, building materials manufactured with multiple layers (i.e. linoleum, wallboard, etc.) are reported as a single sample. Estimation of uncertainty is available on request.

Samples analyzed by EMSL Analytical, Inc. Woburn, MA NVLAP Lab Code 101147-0, CT PH-0315, MA AA000188, RI AAL-139, VT AL998919, ME LB-0039

Initial report from: 02/28/2024 07:05:50

132401081



BOSTON NORTH
155 West Street | Suite 6 | Wilmington, MA 01887 | PHONE 978.688.3736 | FAX 978.688.5494 | FREE 800.659.1202

BULK SAMPLE CHAIN OF CUSTODY FORM

Report to (Inspector Name):	Michael McCarter	Bill To:	Accounts Payable
Company:	EFI Global, Inc.	Address:	Same
Address:	155 West Street Suite 6	City, State, Zip:	Same
City, State, Zip:	Wilmington, MA 01887	Telephone:	800-659-1202
Inspector Cell:	978-604-7662	Email:	US-EFIGlobal-BostonEnviroPC@efiglobal.com
Project Information			
Project No./ Description:	014. 07795 Career Academy		
Email Report to:	Michael.mccarter@efiglobal.com		
Alternate:			
Requested Turnaround Time:			
<input type="checkbox"/> RUSH (6hr)	<input type="checkbox"/> 1 day (24hr)	<input type="checkbox"/> 2 day (48hr)	<input checked="" type="checkbox"/> 3 day (72hr)
<input type="checkbox"/> 5 day			
Media and Methodology			
Type of Analysis:	EPA Method 600/R-93/116	Check for Positive Stop:	X
Notes:		Date Collected:	2-23-24

Sample ID	Type of Material	Location
01A	Gypsum Board	Basement - Electric Closet
01B	↓	2nd Fl - North Stair Stairs
02A	Joint Compound	Basement - Electric Closet
02B	↓	1st - North Stair Stairs
03A	Grey Vinyl core Base adhesive	Basement - Hall
03B	↓	↓ - Guidance Counselor
04A	Black Vinyl core Base adhesive	Basement - Hall
04B	↓	↓ - Industrial Arts
05A	2x4 Insured ceiling tile (old)	Basement - Stairs East side
05B	↓	1st - Trachus

Total Number of Samples Submitted: 52

Samplers Name: Michael McCarter Samplers Signature: *Michael McCarter*

Relinquished By (Client): Michael McCarter Date: 1-23-24 Time: _____

Received By (Lab): _____ Date: _____ Time: _____

REC'D
EMSL-BOSTON FEB 23 2024

walk in


132401081

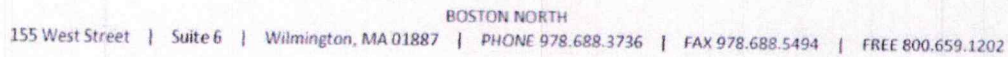


BOSTON NORTH
155 West Street | Suite 6 | Wilmington, MA 01887 | PHONE 978.688.3736 | FAX 978.688.5494 | FREE 800.659.1202

Sample ID	Type of Material	Location
06A	2x4 Insured ceiling tile (newer)	Basement - Stage Exit
06B	↓	1st - Teachers ^{East side}
07A	Plaster Finish Coat	Basement - Stage
07B	↓	- Stage Storage East side
07C	↓	- Horn St side stair
07D	↓	1st fl - Horn St side stair
07E	↓	- Hall
07F	↓	- Principal
07G	↓	2nd floor - Hall
08A	Plaster Base Coat	Basement - Stage
08D	↓	- Stage Storage East side
08C	↓	- Horn St side stair
08D	↓	1st fl - Horn St side stair
08E	↓	- Hall
08F	↓	- Principal
08G	↓	2nd floor - Hall
09A	Ceramic floor tile Grout	Basement Boys Rm.
09D	↓	↓
10A	2x2 ceiling tile	1st fl. Nurse
10B	↓	↓
11A	Fiberboard wall panels	1st floor - Nurse
11D	↓	1 - Room 3
12A	12x12 Gray floor tile	1st floor - Library
12D	↓	↓
13A	↓	↓
13D	↓	↓

Project Number/Description 014.07795
Career Academy

REC'D  Page 2 of 3
EMSL-BOSTON FEB 23 2024



Page 3 of 3
REC'D 03
EMSL-BOSTON FEB 23 2024

ATTACHMENT E

LICENSES AND TRAINING CERTIFICATES OF ASBESTOS INSPECTOR & MANAGEMENT PLANNER



THE COMMONWEALTH OF MASSACHUSETTS
EXECUTIVE OFFICE OF LABOR AND WORKFORCE DEVELOPMENT
DEPARTMENT OF LABOR STANDARDS

Michael Flanagan
Director

ASBESTOS INSPECTOR

MICHAEL MCCARTER

Eff.Date: 09/11/2023

Exp.Date: 09/10/2024

AI001825

Member C.O.N.E.S.

24





This is to certify that

Michael L McCarter

7 Millstone Road, Windham, NH 03087
MA DLS Asbestos Inspector License# AI001825



*has completed requisite training by Video Conference, and has passed an examination for
reaccreditation as:*

Asbestos Inspector Refresher

pursuant to Title II of the Toxic Substance Control Act, 15 U.S.C. 2646

Course Location

Zoom Video Conference

Institute for Environmental Education 16 Upton Drive Wilmington, MA 01887

April 21, 2023

Course Dates

23-4804-106-219102

Certificate Number

April 21, 2023

Examination Date

April 21, 2024

Expiration Date

Training Director

16 Upton Drive, Wilmington, MA 01887

Telephone 978.658.5272

www.ieetrains.com

INSTITUTE FOR ENVIRONMENTAL EDUCATION



THE COMMONWEALTH OF MASSACHUSETTS
EXECUTIVE OFFICE OF LABOR AND WORKFORCE DEVELOPMENT
DEPARTMENT OF LABOR STANDARDS

Michael Flanagan
Director

ASBESTOS MANAGEMENT PLANNER

JENNIFER L. ARCHACKI

Eff.Date: 12/20/2023

Exp.Date: 12/19/2024

AP033118

Member C.O.N.E.S.

24





This is to certify that

Jennifer L. Archacki

31 Pickman Rd., Salem, MA 01970

MA DLS Asbestos Management Planner License# AP033118



*has completed the requisite training by Video Conference, and has passed an examination for
reaccreditation*

Asbestos Management Planner Refresher

pursuant to Title II of the Toxic Substance Control Act, 15 U.S.C. 2646

Course Location

Zoom Video Conference

Institute for Environmental Education 16 Upton Drive Wilmington, MA 01887

April 21, 2023

Course Dates

23-4930-136-200894

Certificate Number

April 21, 2023

Examination Date

April 21, 2024

Expiration Date

Training Director

16 Upton Drive, Wilmington, MA 01887

Telephone 978.658.5272

www.ieetrains.com

INSTITUTE FOR ENVIRONMENTAL EDUCATION